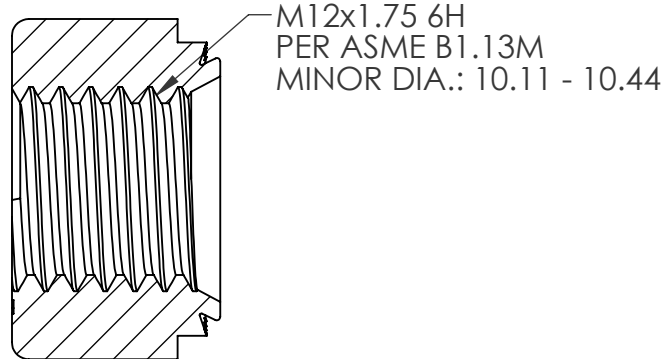
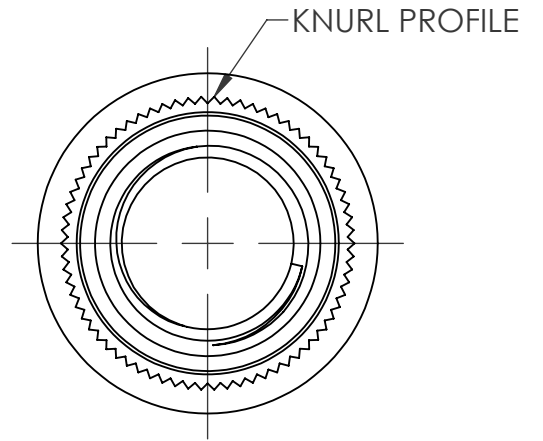
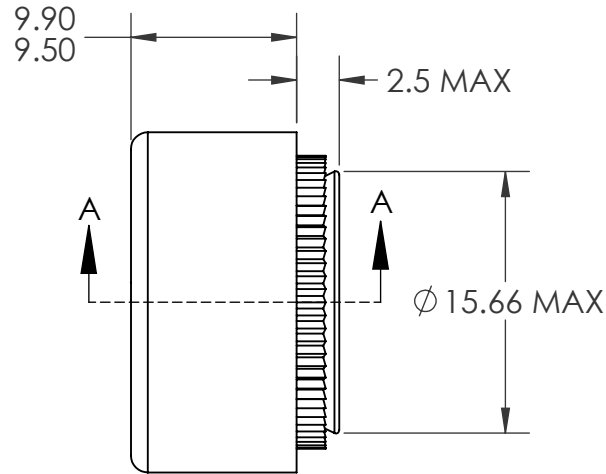
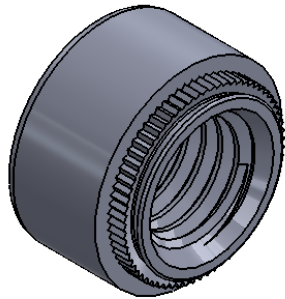
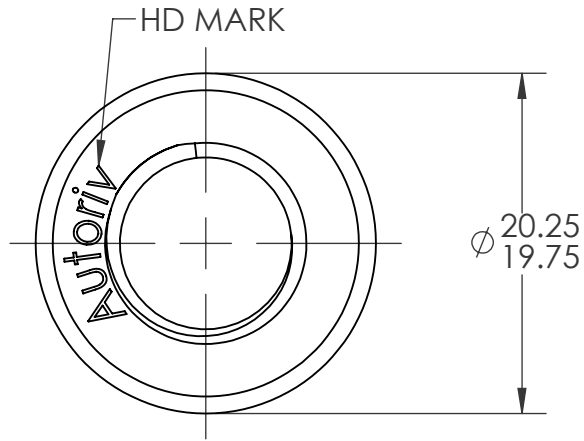


REVISIONS			
REV.	DESCRIPTION	DATE	ECN
A	INITIAL RELEASE	10/26/15	2037

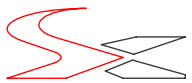



SECTION A-A  
SCALE 2.25 : 1

- NOTE:
1. SHEET THICKNESS: 2.6 MIN.
  2. HOLE SIZE:  $\varnothing 16.0 +0.1/-0.0$  AFTER ALL APPLIED FINISHES.
  3. CLASS 10 PROOF LOAD PER ISO 898-2.

**PROPRIETARY AND CONFIDENTIAL**  
THIS DRAWING, AND THE INFORMATION CONTAINED HEREIN, ARE THE PROPERTY OF SHEREX AND ARE NOT TO BE USED IN ANY MANNER DETRIMENTAL TO THE INTEREST OF THE COMPANY.  
SHEREX SOLUTIONS RESERVES THE RIGHT TO REVISE PART/DRAWING WITHOUT NOTICE.

		UNLESS OTHERWISE SPECIFIED:		NAME	DATE
		DIMENSIONS ARE IN MILLIMETERS TOLERANCES: ANGULAR: MACH $\pm 1$ BEND $\pm 1$ ONE PLACE DECIMAL $\pm .1$ TWO PLACE DECIMAL $\pm .05$		DRAWN	AEC 9/29/15
		INTERPRET GEOMETRIC TOLERANCING PER: ASME Y14.5M-1994		CHECKED	
		MATERIAL 10B21 STEEL		ENG APPR.	JVK 9/29/15
		FINISH ZINC PLATE CLEAR TRIVALENT CHROMATE PER SFS-01-001		MFG APPR.	
NEXT ASSY	USED ON			Q.A.	
APPLICATION		DO NOT SCALE DRAWING		COMMENTS: E-mail: info@sherex.com www.sherex.com Phone: 866-474-3739 Fax: 716-875-0358	

**TITLE:**  
ASN M12 CLINCH NUT

SIZE DWG. NO.	REV
<b>A</b> ASN2-12175-2.6	A

SCALE: 2:1    WEIGHT:    SHEET 1 OF 1