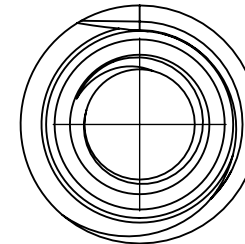
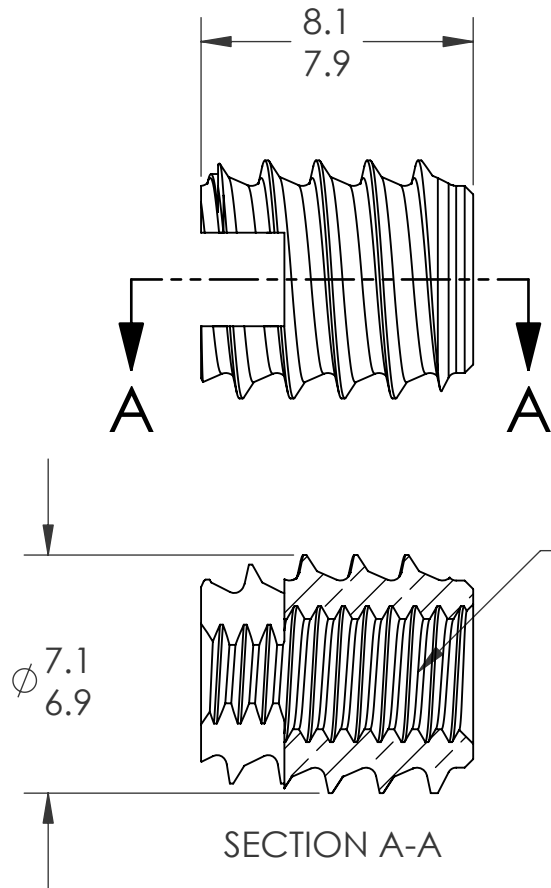


| REVISIONS | | | |
|-----------|-----------------|----------|------|
| REV. | DESCRIPTION | DATE | ECN |
| A | INITIAL RELEASE | 12/31/08 | 1131 |




M4X0.7 6H
PER ASME B1.13M
MINOR DIA.: 3.25 - 3.42

SECTION A-A

NOTES:

- REFER TO CATALOG FOR RECOMMENDED BOSS DIMENSIONS

PROPRIETARY AND CONFIDENTIAL
THIS DRAWING, AND THE INFORMATION CONTAINED HEREIN, ARE THE PROPERTY OF SHEREX AND ARE NOT TO BE USED IN ANY MANNER DETRIMENTAL TO THE INTEREST OF THE COMPANY.
SHEREX RESERVES THE RIGHT TO REVISE PART/DRAWING WITHOUT NOTICE.

| | | | | | | | | | | |
|-------------|--|---|--|--------------|--|---|----------|------------------------------------|-------------------------|----------|
| | | UNLESS OTHERWISE SPECIFIED: | | | |  | | | | |
| | | DIMENSIONS ARE IN MILLIMETERS TOLERANCES: | | DRAWN | | | | NAME | DATE | |
| | | ANGULAR: MACH ±1 BEND ±1 ONE PLACE DECIMAL ±.2 TWO PLACE DECIMAL ±.10 | | CHECKED | | JVK | 12/9/08 | TITLE: M4 THREADSERT | | |
| | | INTERPRET GEOMETRIC TOLERANCING PER: ASME Y14.5M-1994 | | ENG APPR. | | JVK | 12/9/08 | | | |
| | | MATERIAL BRASS C3604 | | MFG APPR. | | TB | 12/30/08 | | | |
| | | FINISH NONE | | Q.A. | | | | | | |
| NEXT ASSY | | USED ON | | COMMENTS: | | E-mail: info@sherex.com www.sherex.com Phone: 866-474-3739 Fax: 716-875-0358 | | SIZE A | DWG. NO. B1T-470-8.0 | REV A |
| APPLICATION | | DO NOT SCALE DRAWING | | SCALE: 4.5:1 | | WEIGHT: | | SHEET 1 OF 1 | | |