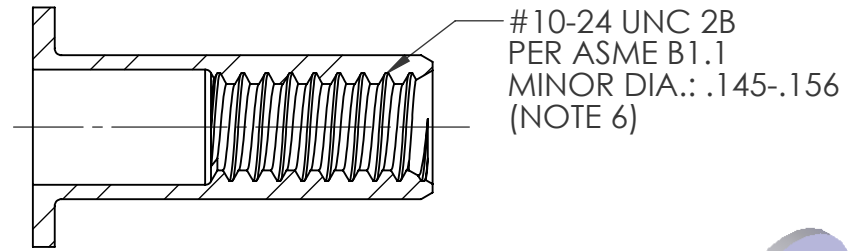
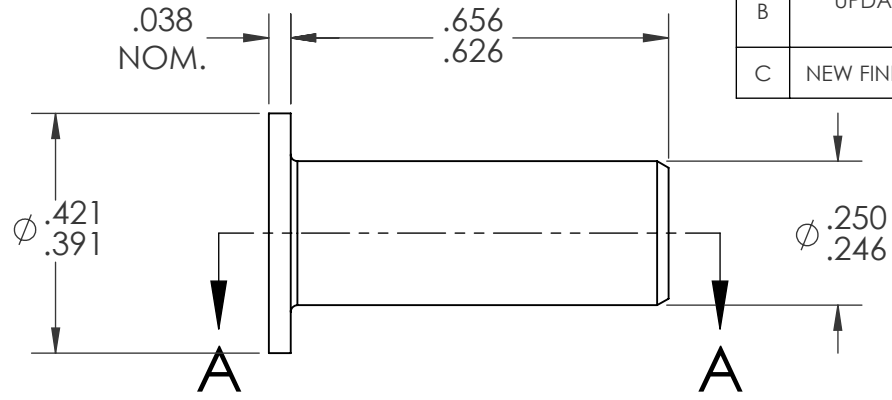
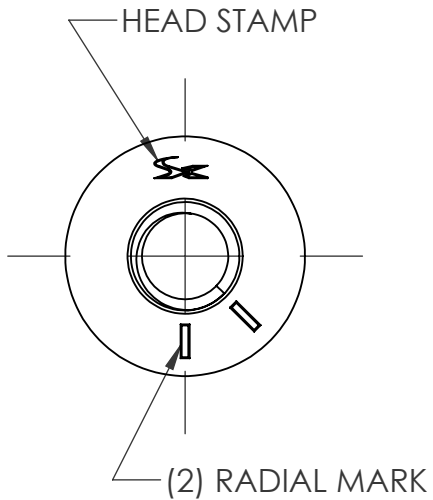
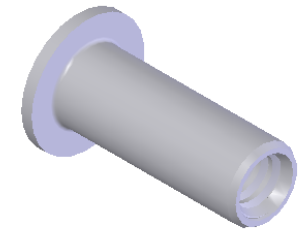


REVISIONS			
REV.	DESCRIPTION	DATE	ECN
A	TOLERANCE CHANGE	5/22/09	1186
B	UPDATE TO CURRENT FORMAT	6/2/10	1316
C	NEW FINISH PER SFS-01-001	1/23/15	1749



SECTION A-A



NOTE:

- GRIP RANGE: .130 - .180
- HOLE SIZE: .250 +.006/-.000 AFTER ALL APPLIED FINISHES.
- INSTALLED LENGTH: .390 REF.
- LUBRICATION: NONE
- INSTALLATION TOOL: SPIN-PULL
- MAY BE PRODUCED TO 3B THREAD CLASS DEPENDING ON THE MANUFACTURING LOT NUMBER OR CUSTOMER REQUIREMENT. SPECIFIC CLASS AVAILABLE UPON REQUEST.

**PROPRIETARY AND CONFIDENTIAL**  
THIS DRAWING, AND THE INFORMATION CONTAINED HEREIN, ARE THE PROPERTY OF SHEREX AND ARE NOT TO BE USED IN ANY MANNER DETRIMENT TO THE INTEREST OF THE COMPANY.  
SHEREX RESERVES THE RIGHT TO REVISE PART/DRAWING WITHOUT NOTICE.

		UNLESS OTHERWISE SPECIFIED: DIMENSIONS ARE IN INCHES TOLERANCES: ANGULAR: MACH ±1 BEND ±1 TWO PLACE DECIMAL ±.01 THREE PLACE DECIMAL ±.005 INTERPRET GEOMETRIC TOLERANCING PER: ASME Y14.5M-1994 MATERIAL C1008/C1010/C1110 FINISH ZINC PLATE W/CLEAR TRIVALENT CHROMATE PER SFS-01-001	NAME TOO TOO AJP	DATE 12/7/05 12/7/05 12/7/05
NEXT ASSY	USED ON	COMMENTS: E-mail: info@sherex.com www.sherex.com Phone: 866-474-3739 Fax: 716-875-0358		
APPLICATION		DO NOT SCALE DRAWING		



TITLE:

FLAT HEAD OPEN END

SIZE <b>A</b>	DWG. NO. CA-1024S-180	REV C
SCALE: 3:1	WEIGHT: .0025 kg	SHEET 1 OF 1