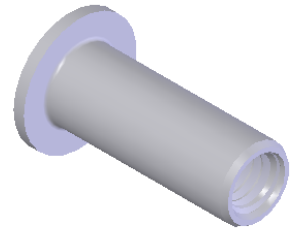
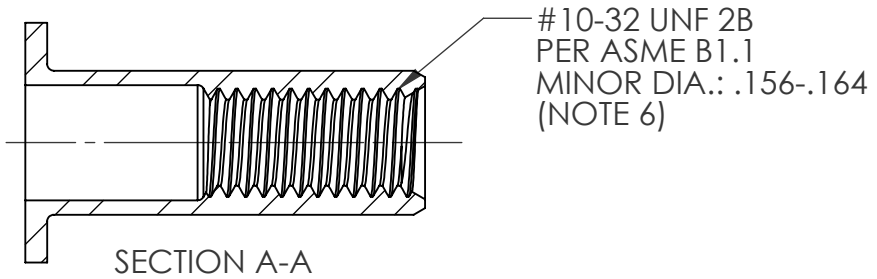
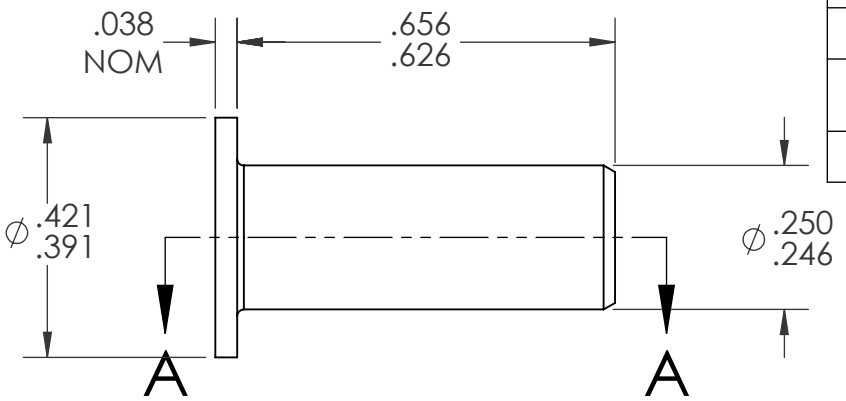
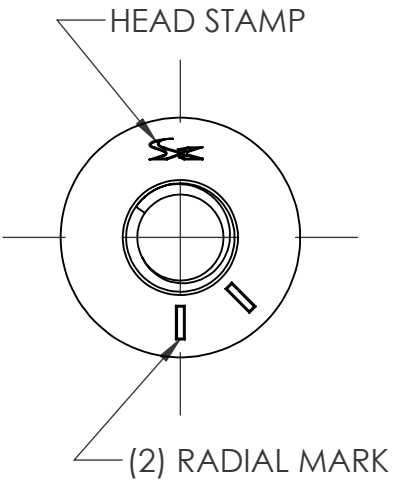



| REVISIONS | | | |
|-----------|---------------------------|---------|------|
| REV. | DESCRIPTION | DATE | ECN |
| A | TOLERANCE CHANGE | 5/22/09 | 1186 |
| B | UPDATE TO CURRENT FORMAT | 6/2/10 | 1316 |
| C | NEW FINISH PER SFS-01-001 | 1/23/15 | 1749 |



- NOTE:
- GRIP RANGE: .130 - .180
 - HOLE SIZE: .250 +.006/-.000 AFTER ALL APPLIED FINISHES.
 - INSTALLED LENGTH: .390 REF.
 - LUBRICATION: NONE
 - INSTALLATION TOOL: SPIN-PULL
 - MAY BE PRODUCED TO 3B THREAD CLASS DEPENDING ON THE MANUFACTURING LOT NUMBER OR CUSTOMER REQUIREMENT. SPECIFIC CLASS AVAILABLE UPON REQUEST.

PROPRIETARY AND CONFIDENTIAL
THIS DRAWING, AND THE INFORMATION CONTAINED HERIN, ARE THE PROPERTY OF SHEREX AND ARE NOT TO BE USED IN ANY MANNER DETRIMENT TO THE INTEREST OF THE COMPANY.
SHEREX RESERVES THE RIGHT TO REVISE PART/DRAWING WITHOUT NOTICE.

| | | | | | |
|-------------|---------|--|--|------|---------|
| | | UNLESS OTHERWISE SPECIFIED: DIMENSIONS ARE IN INCHES TOLERANCES: ANGULAR: MACH ± 1 BEND ± 1 TWO PLACE DECIMAL $\pm .01$ THREE PLACE DECIMAL $\pm .005$ INTERPRET GEOMETRIC TOLERANCING PER: ASME Y14.5M-1994 MATERIAL C1008/C1010/C1110 FINISH ZINC PLATE W/CLEAR TRIVALENT CHROMATE PER SFS-01-001 | | NAME | DATE |
| | | | DRAWN | TOO | 12/7/05 |
| | | | CHECKED | | |
| | | | ENG APPR. | TOO | 12/7/05 |
| | | | MFG APPR. | AJP | 12/7/05 |
| | | | Q.A. | | |
| | | | COMMENTS: E-mail: info@sherex.com www.sherex.com Phone: 866-474-3739 Fax: 716-875-0358 | | |
| NEXT ASSY | USED ON | | | | |
| APPLICATION | | DO NOT SCALE DRAWING | | | |

| | | |
|---|--------------------------|--------------|
|  | | |
| TITLE: FLAT HEAD OPEN END | | |
| SIZE A | DWG. NO. CA-1032S-180 | REV C |
| SCALE: 3:1 | WEIGHT: .0025 kg | SHEET 1 OF 1 |