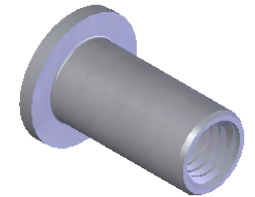
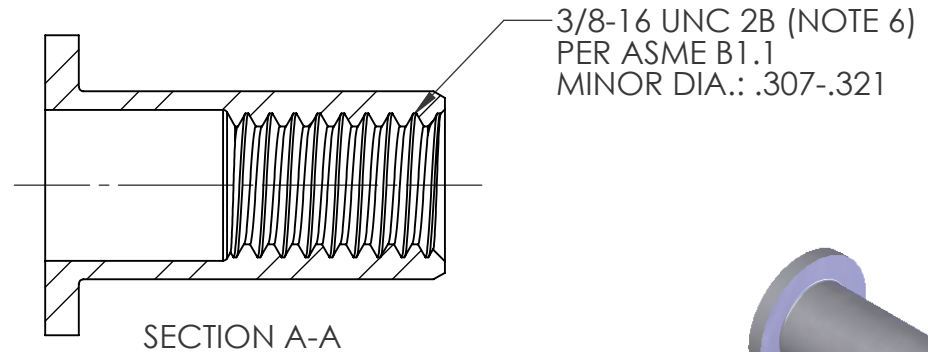


REVISIONS			
REV.	DESCRIPTION	DATE	ECN
A	INITIAL RELEASE	8/11/03	
B	UPDATE TO CURRENT FORMAT	6/3/10	1316
C	NEW FINISH PER SFS-01-001	1/23/15	1749



NOTE:

- GRIP RANGE: .115 - .200
- HOLE SIZE: .490 +.010/-.000 AFTER ALL APPLIED FINISHES.
- INSTALLED LENGTH: .585 REF.
- LUBRICATION: NONE
- INSTALLATION TOOL: MS 100 SPIN PULL
- MAY BE PRODUCED TO 3B THREAD CLASS DEPENDING ON THE MANUFACTURING LOT NUMBER OR CUSTOMER REQUIREMENT. SPECIFIC CLASS AVAILABLE UPON REQUEST.

PROPRIETARY AND CONFIDENTIAL
THIS DRAWING, AND THE INFORMATION CONTAINED HERIN, ARE THE PROPERTY OF SHEREX AND ARE NOT TO BE USED IN ANY MANNER DETRIMENT TO THE INTEREST OF THE COMPANY.
SHEREX RESERVES THE RIGHT TO REVISE PART/DRAWING WITHOUT NOTICE.

		UNLESS OTHERWISE SPECIFIED: DIMENSIONS ARE IN INCHES TOLERANCES: ANGULAR: MACH ± 1 BEND ± 1 TWO PLACE DECIMAL $\pm .01$ THREE PLACE DECIMAL $\pm .005$ INTERPRET GEOMETRIC TOLERANCING PER: ASME Y14.5M-1994 MATERIAL C1008/C1010/C1110 FINISH ZINC PLATE W/CLEAR TRIVALENT CHROMATE PER SFS-01-001			NAME TOO TOO AJP	DATE 8/11/03 8/11/03 8/11/03
NEXT ASSY	USED ON				COMMENTS: E-mail: info@sherex.com www.sherex.com Phone: 866-474-3739 Fax: 716-875-0358	
APPLICATION		DO NOT SCALE DRAWING				



TITLE:
FLAT HEAD OPEN END

SIZE A	DWG. NO. CA-3716S-200	REV C
------------------	--------------------------	----------

SCALE: 2:1 WEIGHT: .0147 kg SHEET 1 OF 1