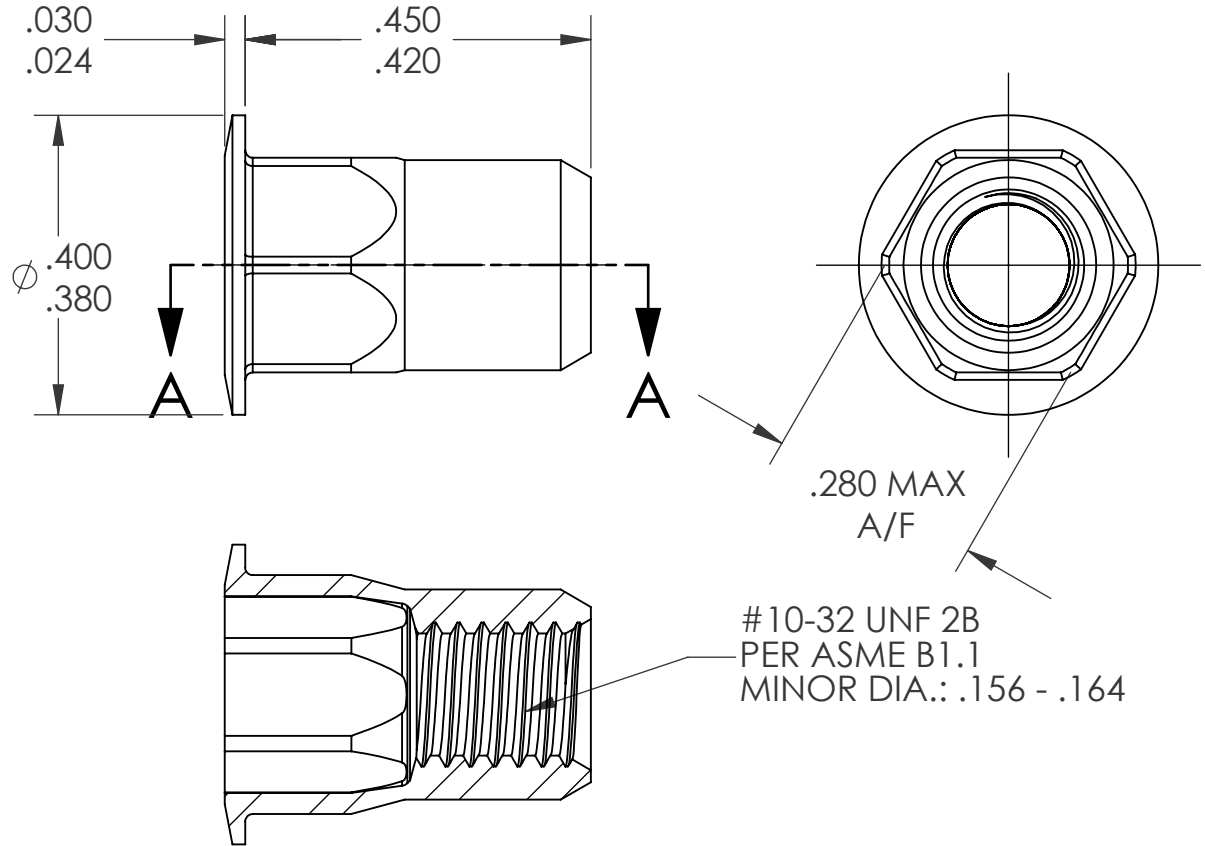


| REVISIONS |                 |         |      |
|-----------|-----------------|---------|------|
| REV.      | DESCRIPTION     | DATE    | ECN  |
| A         | INITIAL RELEASE | 4/30/09 | 1174 |




SECTION A-A

NOTE:

1. GRIP RANGE: .020 - .130
2. HOLE SIZE: .281 +.004/-.000 A/F AFTER ALL APPLIED FINISHES.
3. INSTALLED LENGTH: .295 MAX.
4. LUBRICATION: WAX
5. INSTALLATION TOOL: SSG 802 SPIN SPIN

**PROPRIETARY AND CONFIDENTIAL**  
 THIS DRAWING, AND THE INFORMATION CONTAINED HEREIN, ARE THE PROPERTY OF SHEREX AND ARE NOT TO BE USED IN ANY MANNER DETRIMENTAL TO THE INTEREST OF THE COMPANY.  
 SHEREX SOLUTIONS RESERVES THE RIGHT TO REVISE PART/DRAWING WITHOUT NOTICE.

|             |         |  |                         |             |
|-------------|---------|--|-------------------------|-------------|
|             |         | UNLESS OTHERWISE SPECIFIED:  | NAME                    | DATE        |
|             |         | DIMENSIONS ARE IN INCHES<br>TOLERANCES:<br>ANGULAR: MACH ± 1 BEND ± 1<br>TWO PLACE DECIMAL ± .01<br>THREE PLACE DECIMAL ± .002 | DRAWN                   | TWR 4/30/09 |
|             |         | INTERPRET GEOMETRIC TOLERANCING PER: ASME Y14.5M-1994  | CHECKED                 |             |
|             |         | MATERIAL   | ENG APPR.               | JVK 4/30/09 |
|             |         | 5056 ALUMINUM  | MFG APPR.               |             |
|             |         | FINISH   | Q.A.                    | JVK 4/30/09 |
|             |         | NONE   | COMMENTS:               |             |
| NEXT ASSY   | USED ON |  | E-mail: info@sherex.com |             |
|             |         |  | www.sherex.com          |             |
|             |         |  | Phone: 866-474-3739     |             |
|             |         |  | Fax: 716-875-0358       |             |
| APPLICATION |         | DO NOT SCALE DRAWING   |                         |             |



**TITLE:**  
 LARGE FLANGE SEMI HEX  
 OPEN END

|                        |     |
|------------------------|-----|
| SIZE DWG. NO.          | REV |
| <b>A</b> CAH3-1032-130 | A   |

SCALE: 2:1 WEIGHT: kg SHEET 1 OF 1