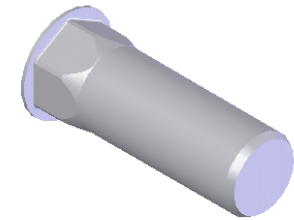


M8X1.25 6H
PER ASME B1.13M
MINOR DIA.: 6.65 - 6.91



NOTE:


1. GRIP RANGE: 0.70 - 3.80
2. HOLE SIZE: 12.70 +0.10/-0.0 AFTER ALL APPLIED FINISHES.
3. INSTALLED LENGTH: 31.37 MAX.
4. INSTALLED THREAD DEPTH: 26.54 REF.
5. LUBRICATION: OIL
6. INSTALLATION TOOL: SSG 803 SPIN SPIN

SECTION A-A
SCALE 2 : 1

REVISIONS			
REV.	DESCRIPTION	DATE	ECN
A	INITIAL RELEASE	9/16/08	1099

PROPRIETARY AND CONFIDENTIAL
THIS DRAWING, AND THE INFORMATION CONTAINED HEREIN, ARE THE PROPERTY OF SHEREX AND ARE NOT TO BE USED IN ANY MANNER DETRIMENTAL TO THE INTEREST OF THE COMPANY.
SHEREX SOLUTIONS RESERVES THE RIGHT TO REVISE PART/DRAWING WITHOUT NOTICE.

		UNLESS OTHERWISE SPECIFIED:		NAME	DATE
		DIMENSIONS ARE IN MILLIMETERS TOLERANCES: ANGULAR: MACH ± 1 BEND ± 1 ONE PLACE DECIMAL ± 0.10 TWO PLACE DECIMAL ± 0.05		DRAWN	JVK 9/16/08
		INTERPRET GEOMETRIC TOLERANCING PER: ASME Y14.5M-1994		CHECKED	
		MATERIAL		ENG APPR.	JVK 9/16/08
		ALUMINUM A5056		MFG APPR.	AP 9/16/08
		FINISH		Q.A.	
		NONE		COMMENTS:	
NEXT ASSY		USED ON		E-mail: info@sherex.com	
				www.sherex.com	
				Phone: 866-474-3739	
				Fax: 716-875-0358	
APPLICATION		DO NOT SCALE DRAWING			

			TITLE:	
			LARGE FLANGE SEMI HEX BODY	
SIZE	DWG. NO.	REV		
A	CAH3-8125-3.8B	A		
SCALE: 2:1	WEIGHT:	kg	SHEET 1 OF 1	