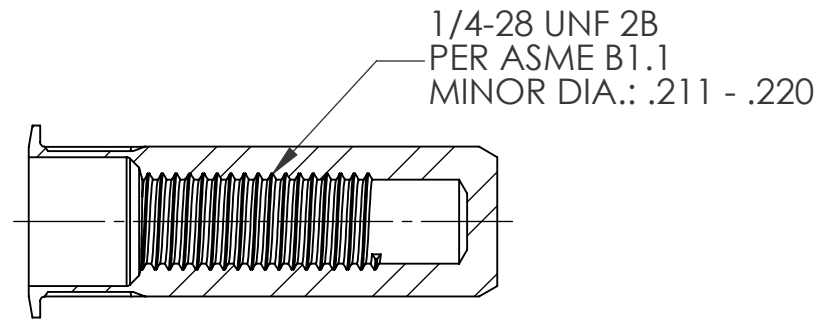
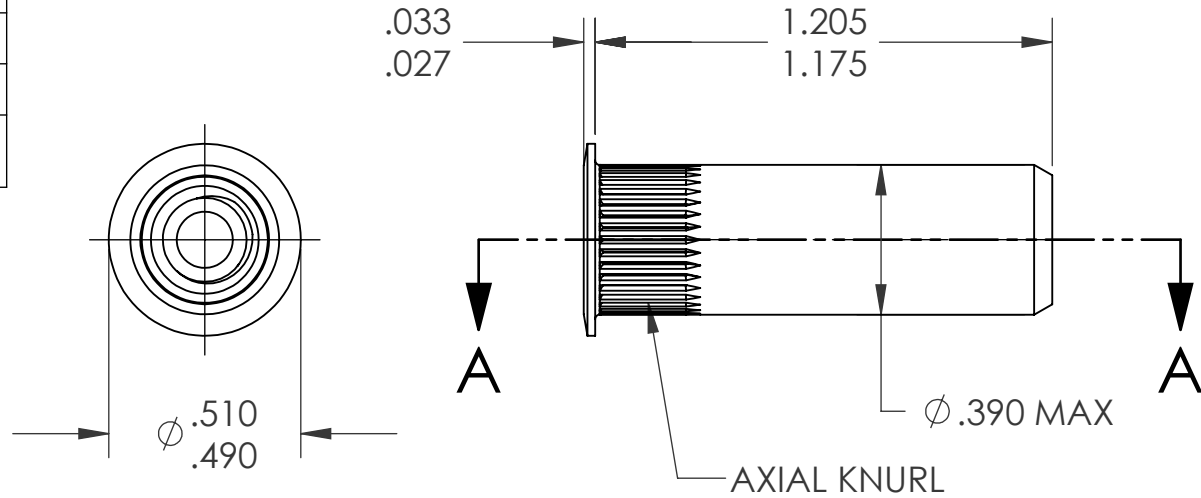
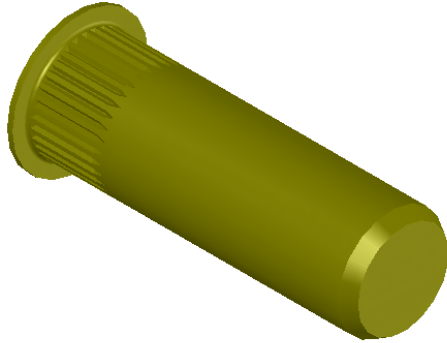


REVISIONS			
REV.	DESCRIPTION	DATE	ECN
A	INITIAL RELEASE	5/23/05	
B	NEW FINISH PER SFS-01-001, SC2	1/14/15	1735



SECTION A-A

NOTE:

- GRIP RANGE: .027 - .165
- HOLE SIZE: .391 +.006/-.000 AFTER ALL APPLIED FINISHES.
- INSTALLED LENGTH: 1.005 MAX.
- INSTALLED THREAD DEPTH: .895 REF.
- LUBRICATION: OIL
- INSTALLATION TOOL: SSG 802 SPIN SPIN

PROPRIETARY AND CONFIDENTIAL
THIS DRAWING, AND THE INFORMATION CONTAINED HEREIN, ARE THE PROPERTY OF SHEREX AND ARE NOT TO BE USED IN ANY MANNER DETRIMENTAL TO THE INTEREST OF THE COMPANY.
SHEREX SOLUTIONS RESERVES THE RIGHT TO REVISE PART/DRAWING WITHOUT NOTICE.

		UNLESS OTHERWISE SPECIFIED:		NAME	DATE		
		DIMENSIONS ARE IN INCHES TOLERANCES: ANGULAR: MACH ± 1 BEND ± 1 TWO PLACE DECIMAL ± .01 THREE PLACE DECIMAL ± .002	DRAWN	TOO	5/23/05		
		INTERPRET GEOMETRIC TOLERANCING PER: ASME Y14.5M-1994	CHECKED			TITLE: LARGE FLANGE CLOSED END	
		MATERIAL	ENG APPR.	TOO	5/23/05		
		C1008/C1010	MFG APPR.	AJP	5/23/05	SIZE DWG. NO. A CAL2-2528-165B	
		FINISH	Q.A.				
NEXT ASSY	USED ON	ZINC PLATE W/YELLOW TRIVALENT CHROMATE PER SFS-01-001, SC2	COMMENTS:			REV B	
			E-mail: info@sherex.com www.sherex.com Phone: 866-474-3739 Fax: 716-875-0358				
APPLICATION		DO NOT SCALE DRAWING	SCALE: 2:1			WEIGHT: .0112 kg	SHEET 1 OF 1