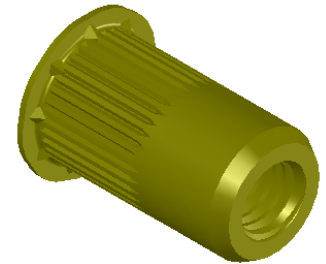


SECTION A-A




NOTE:

1. GRIP RANGE: 4.2 - 6.6
2. HOLE SIZE: 10.00 +0.15/-0.0 AFTER ALL APPLIED FINISHES.
3. INSTALLED LENGTH: 9.65 MAX.
4. LUBRICATION: WAX
5. INSTALLATION TOOL: SSG 802 SPIN SPIN

PROPRIETARY AND CONFIDENTIAL

THIS DRAWING, AND THE INFORMATION CONTAINED HEREIN, ARE THE PROPERTY OF SHEREX AND ARE NOT TO BE USED IN ANY MANNER DETRIMENTAL TO THE INTEREST OF THE COMPANY.
SHEREX SOLUTIONS RESERVES THE RIGHT TO REVISE PART/DRAWING WITHOUT NOTICE.

		UNLESS OTHERWISE SPECIFIED:		NAME	DATE		
		DIMENSIONS ARE IN MILLIMETERS TOLERANCES: ANGULAR: MACH ± 1 BEND ± 1 ONE PLACE DECIMAL ± 0.10 TWO PLACE DECIMAL ± 0.05		DRAWN	TOO		
		INTERPRET GEOMETRIC TOLERANCING PER: ASME Y14.5M-1994		CHECKED			TITLE: LARGE FLANGE OPEN END W/ WEDGES
		MATERIAL C1008/C1010		ENG APPR.	TOO	2/7/05	
		FINISH ZINC PLATE YELLOW DICHROMATE PER ASTM B633 Fe/Zn 8um TYPE II		MFG APPR.	AJP	2/7/05	SIZE DWG. NO. A CAL2-610-6.6W
NEXT ASSY	USED ON			Q.A.			
APPLICATION		DO NOT SCALE DRAWING		COMMENTS: E-mail: info@sherex.com www.sherex.com Phone: 866-474-3739 Fax: 716-875-0358		SCALE: 2:1 WEIGHT: .0050 kg SHEET 1 OF 1	