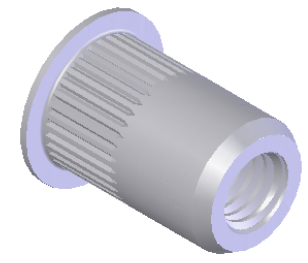


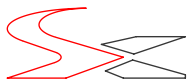
SECTION A-A
SCALE 2 : 1



- NOTE:
1. GRIP RANGE: 0.7 - 4.2
 2. HOLE SIZE: 10.00 +0.15/-0.0 AFTER ALL APPLIED FINISHES.
 3. INSTALLED LENGTH: 9.65 MAX.
 4. LUBRICATION: WAX
 5. INSTALLATION TOOL: SSG 802 SPIN SPIN

PROPRIETARY AND CONFIDENTIAL
THIS DRAWING, AND THE INFORMATION CONTAINED HEREIN, ARE THE PROPERTY OF SHEREX AND ARE NOT TO BE USED IN ANY MANNER DETRIMENTAL TO THE INTEREST OF THE COMPANY.
SHEREX SOLUTIONS RESERVES THE RIGHT TO REVISE PART/DRAWING WITHOUT NOTICE.

		UNLESS OTHERWISE SPECIFIED:		NAME	DATE
		DIMENSIONS ARE IN MILLIMETERS TOLERANCES: ANGULAR: MACH ± 1 BEND ± 1 ONE PLACE DECIMAL ± 0.10 TWO PLACE DECIMAL ± 0.05		DRAWN	TOO 9/4/07
		INTERPRET GEOMETRIC TOLERANCING PER: ASME Y14.5M-1994		CHECKED	
		MATERIAL		ENG APPR.	TOO 9/4/07
		A5056		MFG APPR.	
		FINISH		Q.A.	
		NONE		COMMENTS:	
		DO NOT SCALE DRAWING		E-mail: info@sherex.com www.sherex.com Phone: 866-474-3739 Fax: 716-875-0835	
NEXT ASSY	USED ON				
APPLICATION					

 TITLE: LARGE FLANGE OPEN END		
A	CAL3-610-4.2	A
SCALE: 2:1	WEIGHT: .0017 kg	SHEET 1 OF 1