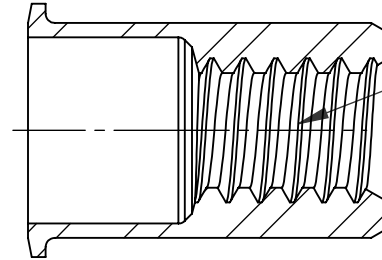
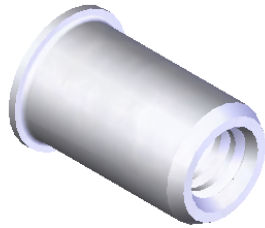
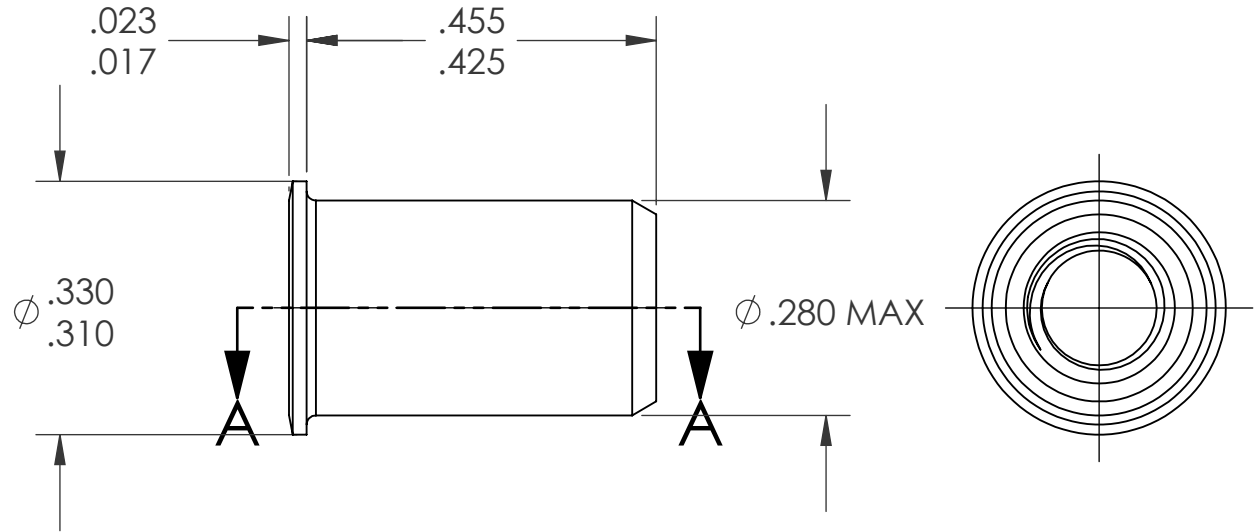


REVISIONS			
REV.	DESCRIPTION	DATE	ECN
A	INITIAL RELEASE	5/8/09	1179



#10-24 UNC 2B  
PER ASME B1.1  
MINOR DIA.: .145-.156

SECTION A-A

NOTE:

- GRIP RANGE: .020 - .130
- HOLE SIZE: .281 +.006/-.000 AFTER ALL APPLIED FINISHES.
- INSTALLED LENGTH: .330 MAX.
- LUBRICATION: WAX
- INSTALLATION TOOL: SSG 802 SPIN SPIN

**PROPRIETARY AND CONFIDENTIAL**

THIS DRAWING, AND THE INFORMATION CONTAINED HEREIN, ARE THE PROPERTY OF SHEREX AND ARE NOT TO BE USED IN ANY MANNER DETRIMENTAL TO THE INTEREST OF THE COMPANY.  
SHEREX SOLUTIONS RESERVES THE RIGHT TO REVISE PART/DRAWING WITHOUT NOTICE.

		UNLESS OTHERWISE SPECIFIED:		NAME	DATE	
		DIMENSIONS ARE IN INCHES TOLERANCES: ANGULAR: MACH ±1 BEND ±1 TWO PLACE DECIMAL ±.01 THREE PLACE DECIMAL ±.002	DRAWN	TWR	5/8/09	
		INTERPRET GEOMETRIC TOLERANCING PER: ASME Y14.5M-1994	CHECKED			
		MATERIAL	ENG APPR.	JVK	5/8/09	
		5056 ALUMINUM	MFG APPR.			
		FINISH	Q.A.	JVK	5/8/09	TITLE:
		NONE	COMMENTS:			SMALL FLANGE SMOOTH BODY
NEXT ASSY	USED ON		E-mail: info@sherex.com www.sherex.com Phone: 866-474-3739 Fax: 716-875-0358			SIZE DWG. NO.
		APPLICATION	DO NOT SCALE DRAWING			<b>A</b> CAO3-1024-130
						REV
						A
						SCALE: 2:1 WEIGHT: kg SHEET 1 OF 1