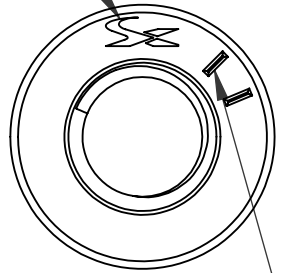
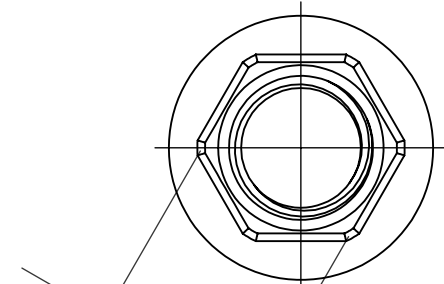
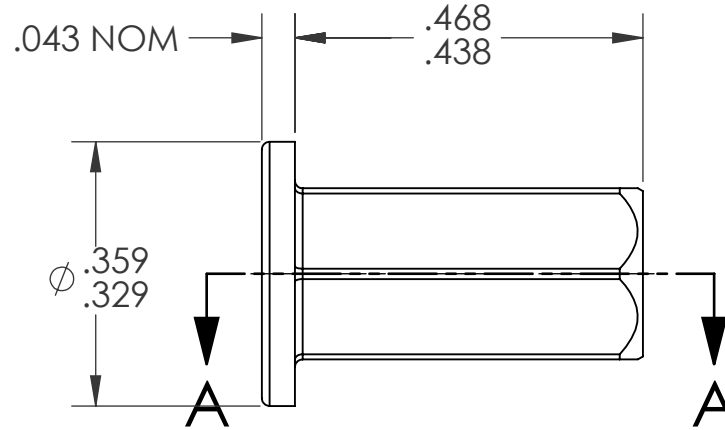


HEAD STAMP

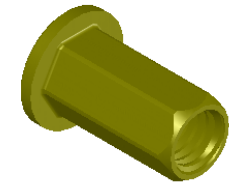
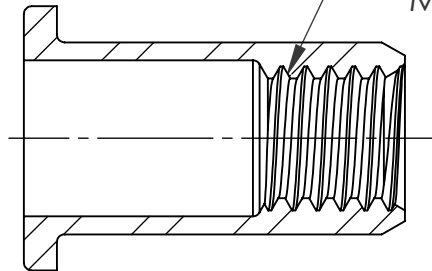


(2) RADIAL MARKS



.223 MAX
A/F

#10-32 UNF 2B
PER ASME B1.1
MNOR DIA.: .156 - .164



NOTE:

1. GRIP RANGE: .135 - .185
2. HOLE SIZE: .223 +.006/-.000 A/F AFTER ALL APPLIED FINISHES.
3. INSTALLED LENGTH: .210 REF.
4. LUBRICATION: NONE
5. INSTALLATION TOOL: MS 50 SPIN-PULL

SECTION A-A

REVISIONS			
REV.	DESCRIPTION	DATE	ECN
A	INITIAL RELEASE	7/20/05	
B	NEW FINISH PER SFS-01-001, SC2	3/4/15	1789

PROPRIETARY AND CONFIDENTIAL

THIS DRAWING, AND THE INFORMATION CONTAINED HEREIN, ARE THE PROPERTY OF SHEREX AND ARE NOT TO BE USED IN ANY MANNER DETRIMENTAL TO THE INTEREST OF THE COMPANY.
SHEREX SOLUTIONS RESERVES THE RIGHT TO REVISE PART/DRAWING WITHOUT NOTICE.

		UNLESS OTHERWISE SPECIFIED:	NAME	DATE
		DIMENSIONS ARE IN INCHES TOLERANCES: ANGULAR: MACH ±1 BEND ±1 TWO PLACE DECIMAL ±.02 THREE PLACE DECIMAL ±.010	DRAWN	TOO 7/20/05
		INTERPRET GEOMETRIC TOLERANCING PER: ASME Y14.5M-1994	CHECKED	
		MATERIAL	ENG APPR.	TOO 7/20/05
		C1008/C1010	MFG APPR.	AJP 7/20/05
		FINISH	Q.A.	
		ZINC PLATE W/YELLOW TRIVALENT CHROMATE PER SFS-01-001, SC2	COMMENTS:	
NEXT ASSY	USED ON		E-mail: info@sherex.com	
			www.sherex.com	
			Phone: 866-474-3739	
			Fax: 716-875-0358	
	APPLICATION	DO NOT SCALE DRAWING		



TITLE:

FLAT HEAD HEX BODY OPEN END

SIZE DWG. NO.

A CFH2-1032-185

REV

B

SCALE: 2:1 WEIGHT: .0012 kg

SHEET 1 OF 1