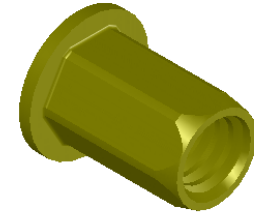


REVISIONS			
REV.	DESCRIPTION	DATE	ECN
A	INITIAL RELEASE	2/8/06	
B	NEW FINISH PER SFS-01-001, SC2	2/27/15	1786

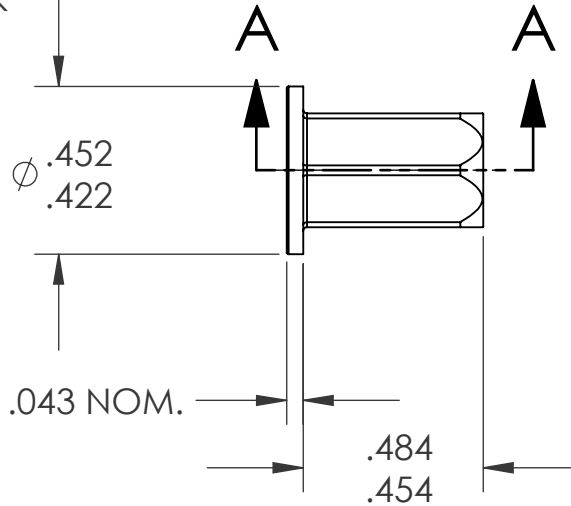
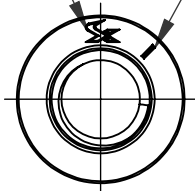
SECTION A-A

1/4-20 UNC 2B
PER ASME B1.1
MINOR DIA.: .196 - .207

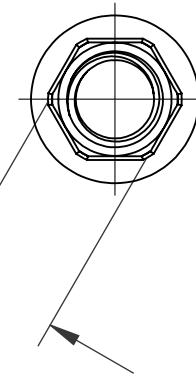


HEAD STAMP

RADIAL MARK



.296 MAX
A/F



NOTE:

- GRIP RANGE: .085 - .145
- HOLE SIZE: .296 +.006/-.000 A/F AFTER ALL APPLIED FINISHES.
- INSTALLED LENGTH: .250 REF.
- LUBRICATION: NONE
- INSTALLATION TOOL: MS 50 SPIN PULL

PROPRIETARY AND CONFIDENTIAL

THIS DRAWING, AND THE INFORMATION CONTAINED HEREIN, ARE THE PROPERTY OF SHEREX AND ARE NOT TO BE USED IN ANY MANNER DETRIMENTAL TO THE INTEREST OF THE COMPANY.
SHEREX SOLUTIONS RESERVES THE RIGHT TO REVISE PART/DRAWING WITHOUT NOTICE.

		UNLESS OTHERWISE SPECIFIED:	NAME	DATE
		DIMENSIONS ARE IN INCHES TOLERANCES: ANGULAR: MACH ± 1 BEND ± 1 TWO PLACE DECIMAL ± .02 THREE PLACE DECIMAL ± .010	DRAWN	TOO 2/8/06
		INTERPRET GEOMETRIC TOLERANCING PER: ASME Y14.5M-1994	CHECKED	
		MATERIAL	ENG APPR.	TOO 2/8/06
		C1008/C1010	MFG APPR.	AJP 2/8/06
		FINISH	Q.A.	
		ZINC PLATE W/YELLOW TRIVALENT CHROMATE PER SFS-01-001, SC2	COMMENTS:	
NEXT ASSY	USED ON		E-mail: info@sherex.com	
			www.sherex.com	
			Phone: 866-474-3739	
			Fax: 716-681-0270	
APPLICATION		DO NOT SCALE DRAWING		

TITLE:		
LARGE FLANGE FULL HEX		
SIZE DWG. NO.	REV	
A CFH2-2520-145	B	
SCALE: 2:1	WEIGHT: .0022 kg	SHEET 1 OF 1