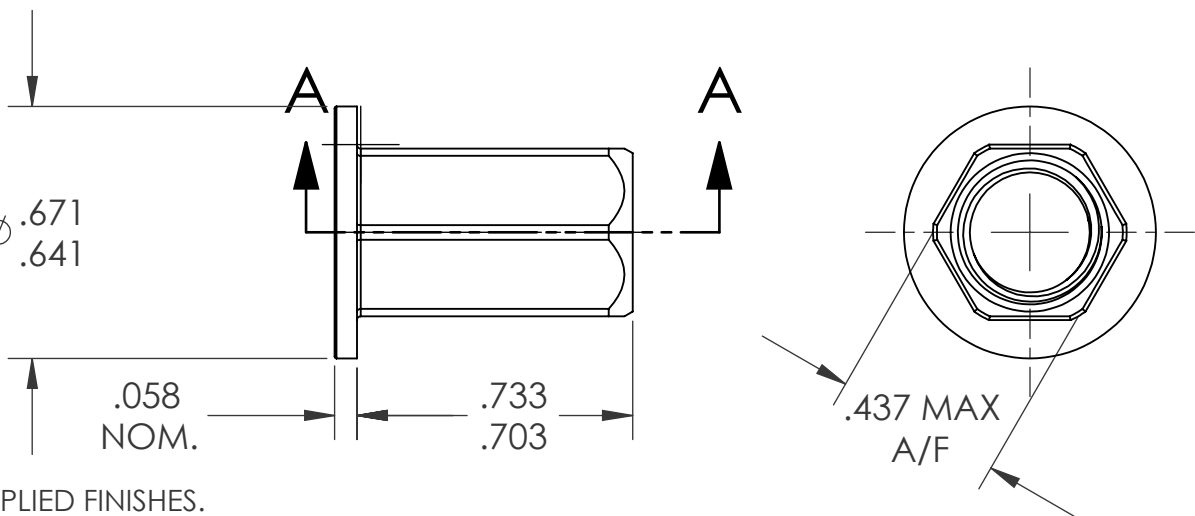
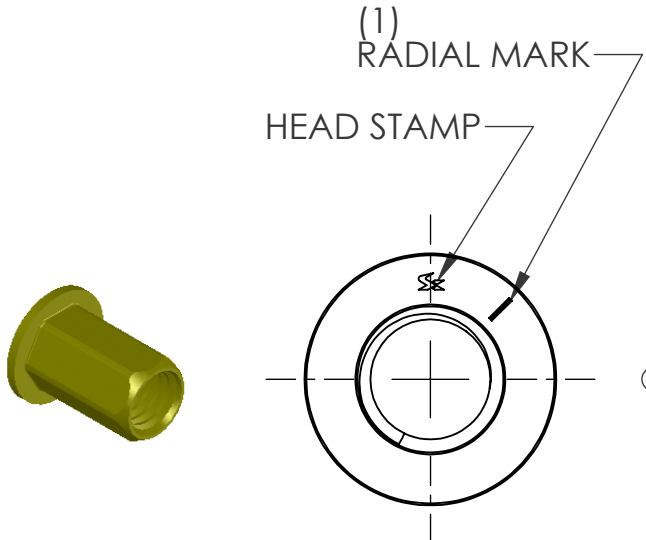
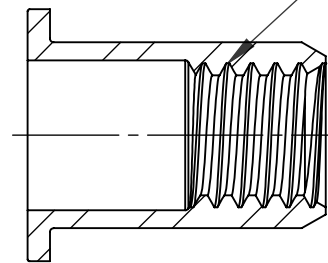


REVISIONS			
REV.	DESCRIPTION	DATE	ECN
A	NEW RELEASE	2/8/06	
B	NEW FINISH PER SFS-01-001, SC2	2/27/15	1786

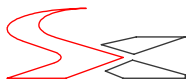
SECTION A-A  
 3/8-16 UNC 2B  
 PER ASME B1.1  
 MINOR DIA.: .307 - .321



- NOTE:
- GRIP RANGE: .115 - .205
  - HOLE SIZE: .437 +.006/+0.000 A/F AFTER ALL APPLIED FINISHES.
  - INSTALLED LENGTH: .405 REF.
  - LUBRICATION: NONE
  - INSTALLATION TOOL: MS 50 SPIN PULL

**PROPRIETARY AND CONFIDENTIAL**  
 THIS DRAWING, AND THE INFORMATION CONTAINED HEREIN, ARE THE PROPERTY OF SHEREX AND ARE NOT TO BE USED IN ANY MANNER DETRIMENTAL TO THE INTEREST OF THE COMPANY.  
 SHEREX SOLUTIONS RESERVES THE RIGHT TO REVISE PART/DRAWING WITHOUT NOTICE.

		UNLESS OTHERWISE SPECIFIED:	NAME	DATE
		DIMENSIONS ARE IN INCHES TOLERANCES: ANGULAR: MACH ± 1 BEND ± 1 TWO PLACE DECIMAL ± .02 THREE PLACE DECIMAL ± .010	DRAWN	TOO 2/8/06
		INTERPRET GEOMETRIC TOLERANCING PER: ASME Y14.5M-1994	CHECKED	
		MATERIAL	ENG APPR.	TOO 2/8/06
		C1008/C1010	MFG APPR.	AJP 2/8/06
		FINISH	Q.A.	
		ZINC PLATE W/YELLOW TRIVALENT CHROMATE PER SFS-01-001, SC2	COMMENTS:	
NEXT ASSY	USED ON		E-mail: info@sherex.com	
			www.sherex.com	
			Phone: 866-474-3739	
			Fax: 716-681-0270	
APPLICATION		DO NOT SCALE DRAWING		



TITLE:  
**LARGE FLANGE FULL HEX**

SIZE	DWG. NO.	REV
<b>A</b>	CFH2-3716-205	<b>B</b>

SCALE: 2:1 WEIGHT: .0070 kg SHEET 1 OF 1