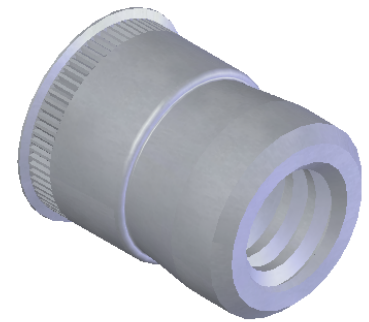



SECTION A-A

NOTE:

1. GRIP RANGE: .030 MIN.
2. HOLE SIZE:
  1. .030 - .090 MT'L THICK.: AFTER ALL APPLIED FINISHES.
  2. .091 - .124 MT'L THICK.: .2900 AFTER ALL APPLIED FINISHES.
  3. .125 - .186 MT'L THICK.: .2900 AFTER ALL APPLIED FINISHES.
  4. .187 - OVER MT'L THICK.: .2969 AFTER ALL APPLIED FINISHES.
3. INSTALLED LENGTH: N/A
4. LUBRICATION: NONE
5. INSTALLATION TOOL: SSG 802 SPIN SPIN



**PROPRIETARY AND CONFIDENTIAL**  
 THIS DRAWING, AND THE INFORMATION CONTAINED HEREIN, ARE THE PROPERTY OF SHEREX AND ARE NOT TO BE USED IN ANY MANNER DETRIMENTAL TO THE INTEREST OF THE COMPANY.  
 SHEREX SOLUTIONS RESERVES THE RIGHT TO REVISE PART/DRAWING WITHOUT NOTICE.

|             |         |  |  |   |                  |   |
|-------------|---------|--|--|---|------------------|---|
|             |         | UNLESS OTHERWISE SPECIFIED:  |  | NAME  | DATE             |  |
|             |         | DIMENSIONS ARE IN INCHES<br>TOLERANCES:<br>ANGULAR: MACH ±1 BEND ±1<br>TWO PLACE DECIMAL ±.01<br>THREE PLACE DECIMAL ±.002 |  | DRAWN   | JLA              |   |
|             |         | INTERPRET GEOMETRIC TOLERANCING PER: ASME Y14.5M-1994  |  | CHECKED   |                  |   |
|             |         | MATERIAL   |  | ENG APPR.   | JLA              | 8/11/03   |
|             |         | 12L14  |  | MFG APPR.   | AJP              | 8/11/03   |
|             |         | FINISH   |  | Q.A.  |                  |   |
|             |         | TIN ALLOY PER ASTM B545  |  | COMMENTS:   |                  | <b>TITLE:</b><br>CADMIUM FREE<br>SMALL FLANGE SWAGING SERIES                          |
| NEXT ASSY   | USED ON |  |  | E-mail: info@sherex.com<br>www.sherex.com<br>Phone: 866-474-3739<br>Fax: 716-875-0358 |                  |   |
| APPLICATION |         | DO NOT SCALE DRAWING   |  | SIZE  | DWG. NO.         | REV   |
|             |         |  |  | <b>A</b>  | CFT2-1024        | <b>A</b>  |
|             |         |  |  | SCALE: 2:1  | WEIGHT: .0012 kg | SHEET 1 OF 1  |