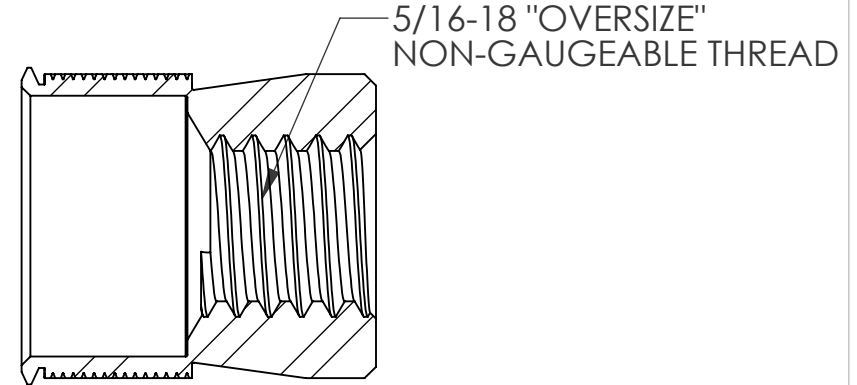
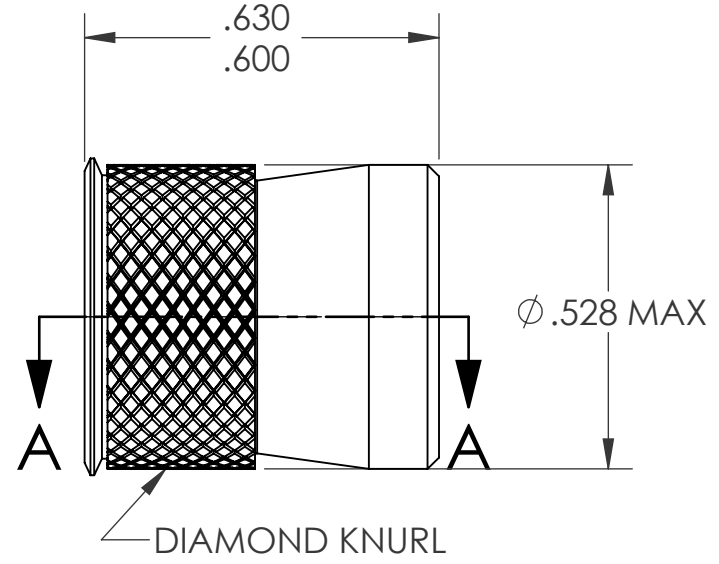
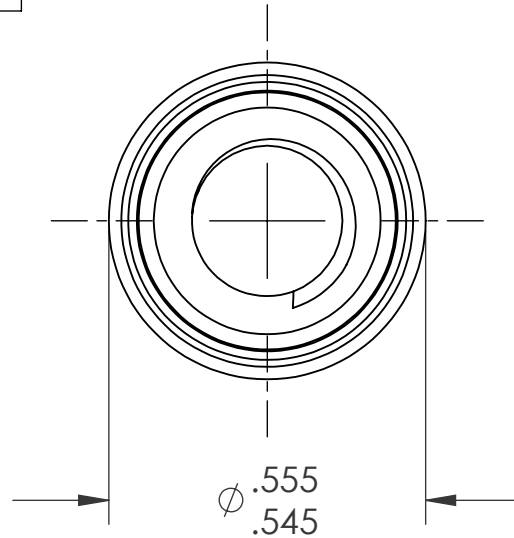
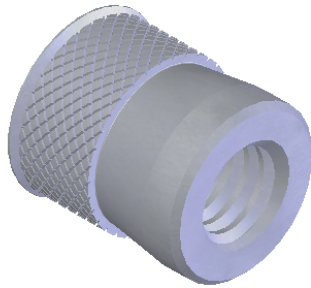


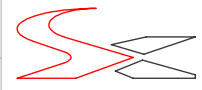
REVISIONS			
REV.	DESCRIPTION	DATE	ECN
A	INITIAL RELEASE	5/13/09	1182



SECTION A-A
SCALE 3 : 1

- NOTE:
1. GRIP RANGE: .062 MIN.
 2. HOLE SIZE: AFTER ALL APPLIED FINISHES.
 3. INSTALLED LENGTH: N/A
 4. LUBRICATION: NONE
 5. INSTALLATION TOOL: SSG 803 SPIN SPIN

PROPRIETARY AND CONFIDENTIAL
THIS DRAWING, AND THE INFORMATION CONTAINED HEREIN, ARE THE PROPERTY OF SHEREX AND ARE NOT TO BE USED IN ANY MANNER DETRIMENTAL TO THE INTEREST OF THE COMPANY.
SHEREX SOLUTIONS RESERVES THE RIGHT TO REVISE PART/DRAWING WITHOUT NOTICE.

		UNLESS OTHERWISE SPECIFIED:		NAME	DATE	
		DIMENSIONS ARE IN INCHES TOLERANCES: ANGULAR: MACH ± 1 BEND ± 1 TWO PLACE DECIMAL ± .01 THREE PLACE DECIMAL ± .002		DRAWN	TWR 5/13/09	
		INTERPRET GEOMETRIC TOLERANCING PER: ASME Y14.5M-1994		CHECKED		TITLE: CADMIUM FREE KNURLED BODY SWAGING
		MATERIAL		ENG APPR.	JVK 5/13/09	
		6061-T6 ALUMINUM		MFG APPR.		
		FINISH		Q.A.	JVK 5/13/09	SIZE DWG. NO. A CFW3-3118
		TIN ALLOY PER ASTM B545		COMMENTS: E-mail: info@sherex.com www.sherex.com Phone: 866-474-3739 Fax: 716-875-0358		
NEXT ASSY	USED ON					REV A
APPLICATION		DO NOT SCALE DRAWING				SCALE: 2:1 WEIGHT: .0079 kg SHEET 1 OF 1