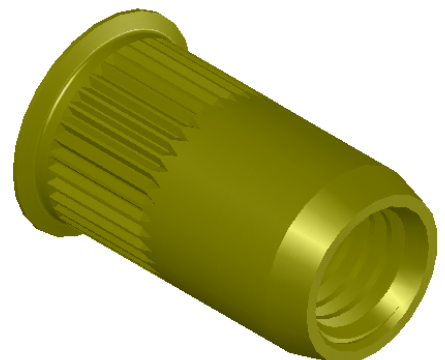


M5X0.8 6H
PER ASME B1.13M
MINOR DIA.: 4.13 - 4.33

SECTION A-A

REVISIONS			
REV.	DESCRIPTION	DATE	ECN
A	INITIAL RELEASE	8/11/03	
B	UPDATE HD. & TOOLING, UPDATE FINISH TO SHEREX SPEC	12/6/10	1374
C	NEW FINISH PER SFS-01-001, SC2	3/2/15	1787



- NOTE:
- GRIP RANGE: 0.25 - 3.00
 - HOLE SIZE: 7.0 +0.1/-0.0 AFTER ALL APPLIED FINISHES.
 - INSTALLED LENGTH: 7.9 REF.
 - LUBRICATION: NONE
 - INSTALLATION TOOL: SPIN PULL

PROPRIETARY AND CONFIDENTIAL
THIS DRAWING, AND THE INFORMATION CONTAINED HEREIN, ARE THE PROPERTY OF SHEREX AND ARE NOT TO BE USED IN ANY MANNER DETRIMENTAL TO THE INTEREST OF THE COMPANY.
SHEREX RESERVES THE RIGHT TO REVISE PART/DRAWING WITHOUT NOTICE.

UNLESS OTHERWISE SPECIFIED: DIMENSIONS ARE IN MILLIMETERS TOLERANCES: ANGULAR: MACH ±1 BEND ±1 TWO PLACE DECIMAL ±.10 THREE PLACE DECIMAL ±.05		NAME	DATE
		JLA	8/11/03
		CHECKED	
		ENG APPR.	JLA 8/11/03
		MFG APPR.	AJP 8/11/03
		Q.A.	
		COMMENTS: E-mail: info@sherex.com www.sherex.com Phone: 866-474-3739 Fax: 716-875-0358	
MATERIAL	C1008/C1010		
FINISH	ZINC PLATE W/YELLOW TRIVALENT CHROMATE PER SFS-01-001, SC2		
NEXT ASSY	USED ON		
APPLICATION		DO NOT SCALE DRAWING	

TITLE: SMALL FLANGE KNURLED BODY		
SIZE A	DWG. NO. CKM2-580-3.0	REV C
SCALE: 4:1	WEIGHT: .0013 kg	SHEET 1 OF 1