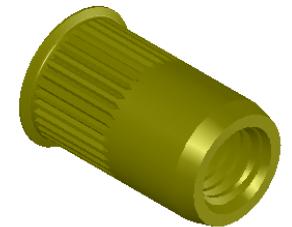



SECTION A-A

REVISIONS			
REV.	DESCRIPTION	DATE	ECN
A	INITIAL RELEASE	8/11/03	
B	UPDATE HD. & TOOLING, UPDATE FINISH TO SHEREX SPEC.	12/6/10	1374
C	NEW FINISH PER SFS-01-001, SC2	3/2/15	1787

NOTE:

- GRIP RANGE: 0.5 - 3.0
- HOLE SIZE: 9.0 +0.1/-0.0 AFTER ALL APPLIED FINISHES.
- INSTALLED LENGTH: 9.40 REF.
- LUBRICATION: NONE
- INSTALLATION TOOL: SPIN PULL



<p>PROPRIETARY AND CONFIDENTIAL</p> <p>THIS DRAWING, AND THE INFORMATION CONTAINED HERIN, ARE THE PROPERTY OF SHEREX AND ARE NOT TO BE USED IN ANY MANNER DETRIMENT TO THE INTEREST OF THE COMPANY.</p> <p>SHEREX RESERVES THE RIGHT TO REVISE PART/DRAWING WITHOUT NOTICE.</p>			UNLESS OTHERWISE SPECIFIED: DIMENSIONS ARE IN MILLIMETERS TOLERANCES: ANGULAR: MACH ±1 BEND ±1 TWO PLACE DECIMAL ±.10 THREE PLACE DECIMAL ±.05 INTERPRET GEOMETRIC TOLERANCING PER: ASME Y14.5M-1994						 <p>TITLE: SMALL FLANGE KNURLED BODY</p>	
			MATERIAL C1008/C1010	DRAWN JLA	NAME JLA	DATE 8/11/03				
			FINISH ZINC PLATE W/YELLOW TRIVALENT CHROMATE PER SFS-01-001, SC2	CHECKED	ENG APPR. JLA	8/11/03				
				MFG APPR. AJP	8/11/03					
				COMMENTS: E-mail: info@sherex.com www.sherex.com Phone: 866-474-3739 Fax: 716-875-0358						
	NEXT ASSY	USED ON	APPLICATION					SIZE A	DWG. NO. CKM2-610-3.0	REV C
			DO NOT SCALE DRAWING					SCALE: 3:1	WEIGHT: .0028 kg	SHEET 1 OF 1