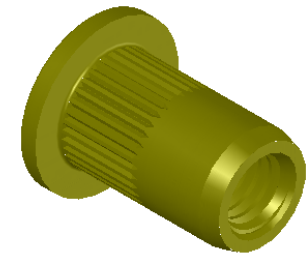


SECTION A-A



REVISIONS			
REV.	DESCRIPTION	DATE	ECN
A	INITIAL RELEASE	8/11/03	
B	UPDATE HD. & TOOLING. UPDATE FINISH TO SHEREX SPEC	12/6/10	1374
C	NEW FINISH PER SFS-01-001, SC2	3/2/15	1787

NOTE:

- GRIP RANGE: 0.5 - 3.0
- HOLE SIZE: 9.0 +0.1/-0.0 AFTER ALL APPLIED FINISHES.
- INSTALLED LENGTH: 9.40 REF.
- LUBRICATION: NONE
- INSTALLATION TOOL: SPIN PULL

PROPRIETARY AND CONFIDENTIAL
 THIS DRAWING, AND THE INFORMATION CONTAINED HEREIN, ARE THE PROPERTY OF SHEREX AND ARE NOT TO BE USED IN ANY MANNER DETRIMENTAL TO THE INTEREST OF THE COMPANY.
 SHEREX RESERVES THE RIGHT TO REVISE PART/DRAWING WITHOUT NOTICE.

		UNLESS OTHERWISE SPECIFIED: DIMENSIONS ARE IN MILLIMETERS TOLERANCES: ANGULAR: MACH ±1 BEND ±1 TWO PLACE DECIMAL ±.10 THREE PLACE DECIMAL ±.05 INTERPRET GEOMETRIC TOLERANCING PER: ASME Y14.5M-1994		NAME	DATE
		MATERIAL C1008/C1010		JLA	8/11/03
		FINISH ZINC PLATE W/YELLOW TRIVALENT CHROMATE PER SFS-01-001, SC2		JLA	8/11/03
NEXT ASSY	USED ON		AJP		8/11/03
APPLICATION		DO NOT SCALE DRAWING	Q.A.		
			COMMENTS: E-mail: info@sherex.com www.sherex.com Phone: 866-474-3739 Fax: 716-875-0358		



TITLE:
LARGE FLANGE KNURLED BODY

SIZE A	DWG. NO. CLM2-610-3.0	REV C
------------------	--------------------------	----------

SCALE: 2:1 WEIGHT: .0038 kg SHEET 1 OF 1