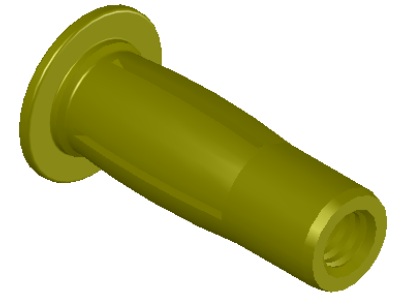


SECTION A-A



REVISIONS			
REV.	DESCRIPTION	DATE	ECN
A	INITIAL RELEASE	7/20/05	
B	NEW FINISH PER SFS-01-001, SC2	3/9/15	1797

- NOTE:
- GRIP RANGE: .175 - .320
 - HOLE SIZE: .336 +.006/- .000 AFTER ALL APPLIED FINISHES.
 - INSTALLED LENGTH: .410 REF.
 - LUBRICATION: WAX
 - INSTALLATION TOOL: SSG 802

PROPRIETARY AND CONFIDENTIAL
THIS DRAWING, AND THE INFORMATION CONTAINED HEREIN, ARE THE PROPERTY OF SHEREX AND ARE NOT TO BE USED IN ANY MANNER DETRIMENTAL TO THE INTEREST OF THE COMPANY.
SHEREX RESERVES THE RIGHT TO REVISE PART/DRAWING WITHOUT NOTICE.

		UNLESS OTHERWISE SPECIFIED: DIMENSIONS ARE IN INCHES TOLERANCES: ANGULAR: MACH ±1 BEND ±1 TWO PLACE DECIMAL ±.02 THREE PLACE DECIMAL ±.010 INTERPRET GEOMETRIC TOLERANCING PER: ASME Y14.5M-1994 MATERIAL C1008/C1010 FINISH ZINC PLATE W/YELLOW TRIVALENT CHROMATE PER SFS-01-001, SC2			NAME TOO	DATE 7/20/05
					CHECKED	
					ENG APPR.	TOO 7/20/05
					MFG APPR.	AJP 7/20/05
					Q.A.	
					COMMENTS: E-mail: info@sherex.com www.sherex.com Phone: 866-474-3739 Fax: 716-875-0358	
NEXT ASSY	USED ON					
APPLICATION		DO NOT SCALE DRAWING				



TITLE:
PRE-BULBED SLOTTED BODY

SIZE A	DWG. NO. CPB2-1024-320	REV B
------------------	---------------------------	----------

SCALE: 2:1 WEIGHT: .0054 kg SHEET 1 OF 1