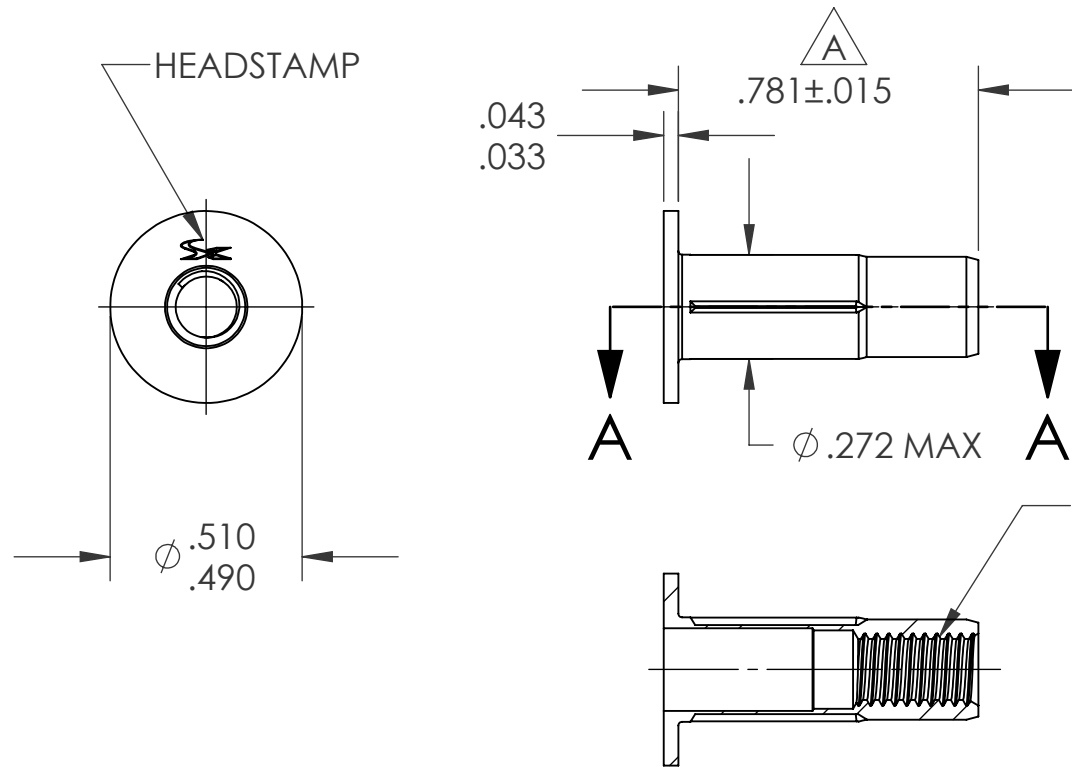
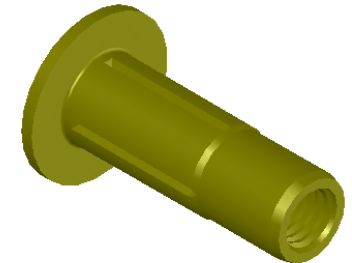


REVISIONS			
REV.	DESCRIPTION	DATE	ECN
A	.781 WAS .828	8/10/2006	
B	NEW FINISH PER SFS-01-001, SC2	1/26/15	1751



SECTION A-A
SCALE 2 : 1



NOTE:

- GRIP RANGE: .020 - .175
- HOLE SIZE: .273 +.006/-.000 AFTER ALL APPLIED FINISHES.
- INSTALLED LENGTH: .425 REF.
- LUBRICATION: NONE
- INSTALLATION TOOL: MS 50 SPIN PULL

PROPRIETARY AND CONFIDENTIAL
THIS DRAWING, AND THE INFORMATION CONTAINED HEREIN, ARE THE PROPERTY OF SHEREX AND ARE NOT TO BE USED IN ANY MANNER DETRIMENTAL TO THE INTEREST OF THE COMPANY.
SHEREX SOLUTIONS RESERVES THE RIGHT TO REVISE PART/DRAWING WITHOUT NOTICE.

		UNLESS OTHERWISE SPECIFIED:		NAME	DATE	
		DIMENSIONS ARE IN INCHES TOLERANCES: ANGULAR: MACH ± 1 BEND ± 1 TWO PLACE DECIMAL ± .01 THREE PLACE DECIMAL ± .002	DRAWN	TOO	5/23/05	
		INTERPRET GEOMETRIC TOLERANCING PER: ASME Y14.5M-1994	CHECKED			TITLE: STRAIGHT SHANK SLOTTED BODY
		MATERIAL C1008/C1010	ENG APPR.	TOO	5/23/05	
		FINISH ZINC PLATE W/YELLOW TRIVALENT CHROMATE PER SFS-01-001, SC2	MFG APPR.	AJP	5/23/05	SIZE DWG. NO. A CPN2-1032-175
NEXT ASSY	USED ON		Q.A.			
APPLICATION		DO NOT SCALE DRAWING	COMMENTS: E-mail: info@sherex.com www.sherex.com Phone: 866-474-3739 Fax: 716-875-0358			SCALE: 2:1
						WEIGHT: .0033 kg
						SHEET 1 OF 1