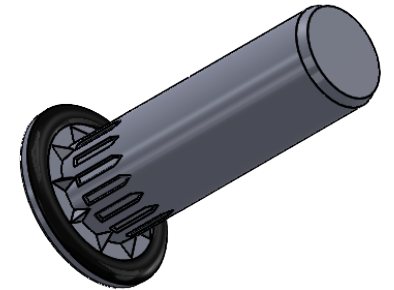
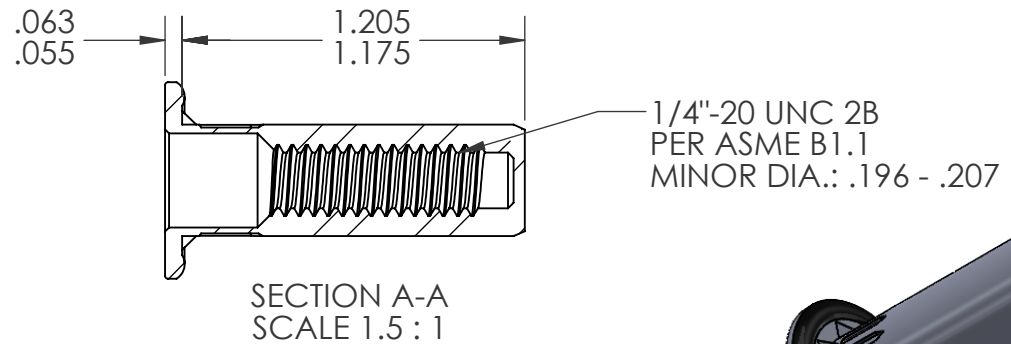
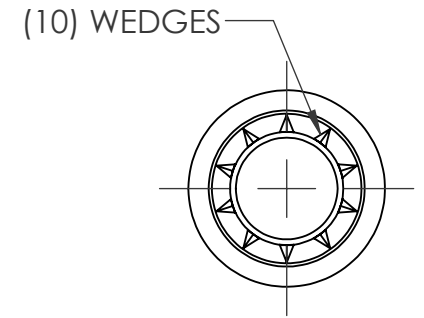
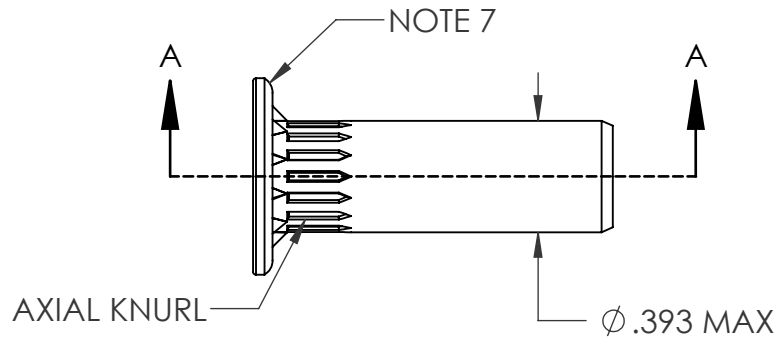
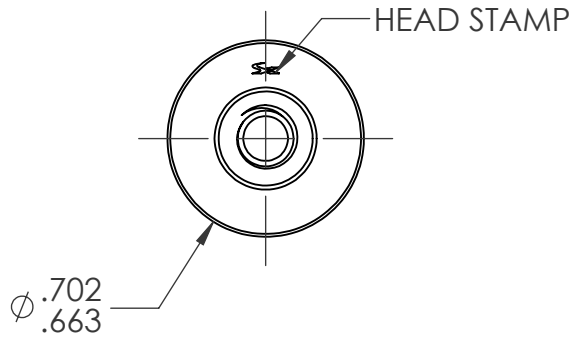


REVISIONS				
REV.	DESCRIPTION	DATE	ECN	INITIALS
A	INITIAL RELEASE	02/08/2023	4193	MRA



**NOTE:**

- GRIP RANGE: 0.059 - 0.138
- HOLE SIZE:  $.394 +.006/-0.000$  AFTER ALL APPLIED FINISHES.
- INSTALLED LENGTH:  $.994 \text{ MAX.}$
- INSTALLED THREAD DEPTH:  $.748 \text{ MIN.}$  IN MIN. GRIP
- INSTALLATION TOOL: SPIN-PULL
- THREAD MUST MEET GRADE 5 PROOF LOAD PER SAE J995: 4250 lbf.
- DEPOSIT PLASTISOL ALONG OUTER GROOVE OF THE HEAD

**PROPRIETARY AND CONFIDENTIAL**

THIS DRAWING, AND THE INFORMATION CONTAINED HEREIN, ARE THE PROPERTY OF SHEREX AND ARE NOT TO BE USED IN ANY MANNER DETRIMENTAL TO THE INTEREST OF THE COMPANY.  
SHEREX SOLUTIONS RESERVES THE RIGHT TO REVISE PART/DRAWING WITHOUT NOTICE.

			UNLESS OTHERWISE SPECIFIED:		NAME	DATE			
			DIMENSIONS ARE IN INCHES TOLERANCES: ANGULAR: MACH ± 1 BEND ± 1 TWO PLACE DECIMAL ± .01 THREE PLACE DECIMAL ± .005	DRAWN	MRA	2/8/23			
			INTERPRET GEOMETRIC TOLERANCING PER: ASME Y14.5M-1994	CHECKED			TITLE: <b>1/4"-20 CLOSED END LARGE FLANGE OPTISERT</b>		
			MATERIAL C1008/C1010 STEEL	ENG APPR.	JVK	2/8/23			
			FINISH ZINC PLATE CLEAR TRIVALENT CHROMATE PER SFS-01-001; SC1	MFG APPR.			SIZE DWG. NO.	REV	
NEXT ASSY	USED ON			Q.A.			<b>A</b> OPT2-2520-138BS	A	
APPLICATION			DO NOT SCALE DRAWING	COMMENTS: E-mail: info@sherex.com www.sherex.com Phone: 866-474-3739 Fax: 716-875-0358			SCALE: 3:2	WEIGHT:	SHEET 1 OF 1