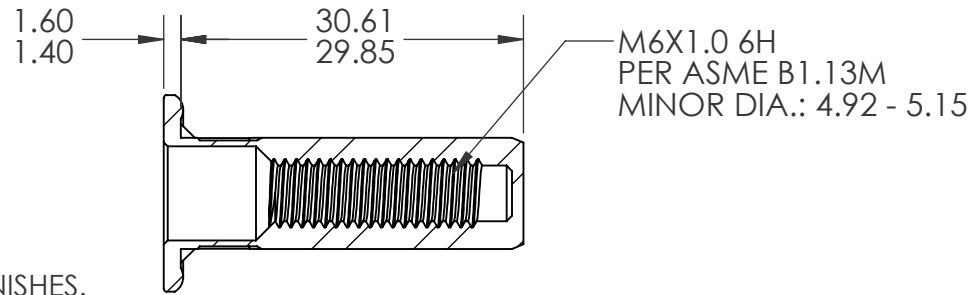
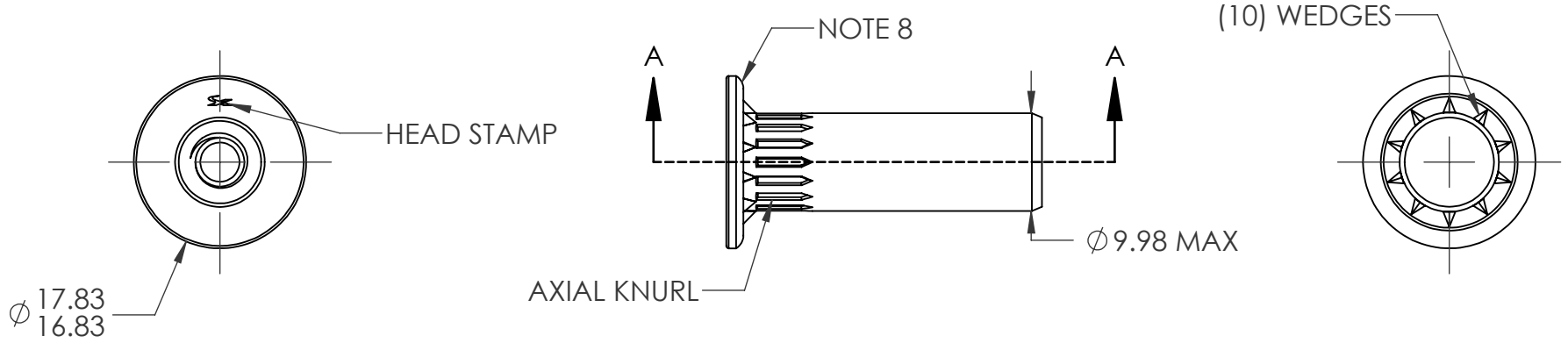


REVISIONS				
REV.	DESCRIPTION	DATE	ECN	INITIALS
A	INITIAL RELEASE	02/08/2023	4193	MRA



NOTE:

- GRIP RANGE: 1.5 - 3.5
- HOLE SIZE: 10.00 +0.15/-0.00 AFTER ALL APPLIED FINISHES.
- INSTALLED LENGTH: 25.25 MAX
- INSTALLED THREAD DEPTH: 19.0 MIN IN MIN GRIP
- LUBRICATION: NONE
- INSTALLATION TOOL: SPIN-PULL
- THREAD MEET CLASS 8 PROOF LOAD: 17.2 kN PER ISO 898-2
- DEPOSIT PLASTISOL ALONG OUTER GROOVE OF THE HEAD

SECTION A-A
SCALE 1.5 : 1

PROPRIETARY AND CONFIDENTIAL
THIS DRAWING, AND THE INFORMATION CONTAINED HEREIN, ARE THE PROPERTY OF SHEREX AND ARE NOT TO BE USED IN ANY MANNER DETRIMENTAL TO THE INTEREST OF THE COMPANY.
SHEREX SOLUTIONS RESERVES THE RIGHT TO REVISE PART/DRAWING WITHOUT NOTICE.

		UNLESS OTHERWISE SPECIFIED:		NAME	DATE	
		DIMENSIONS ARE IN MILLIMETERS TOLERANCES: ANGULAR: MACH ± 1 BEND ± 1 ONE PLACE DECIMAL ± 0.3 TWO PLACE DECIMAL ± 0.08		DRAWN	MRA	
		INTERPRET GEOMETRIC TOLERANCING PER: ASME Y14.5M-1994		CHECKED		TITLE: M6 CLOSED END LARGE FLANGE OPTISERT
		MATERIAL C1008/C1010 STEEL		ENG APPR.	JVK	
		FINISH ZINC PLATE CLEAR TRIVALENT CHROMATE PER SFS-01-001; SC1		MFG APPR.		SIZE DWG. NO. A OPT2-610-3.5BS
NEXT ASSY	USED ON			Q.A.		
APPLICATION		DO NOT SCALE DRAWING		COMMENTS: E-mail: info@sherex.com www.sherex.com Phone: 866-474-3739 Fax: 716-875-0358		SCALE: 3:2 WEIGHT: SHEET 1 OF 1