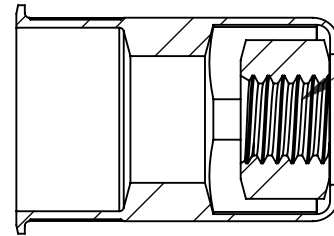
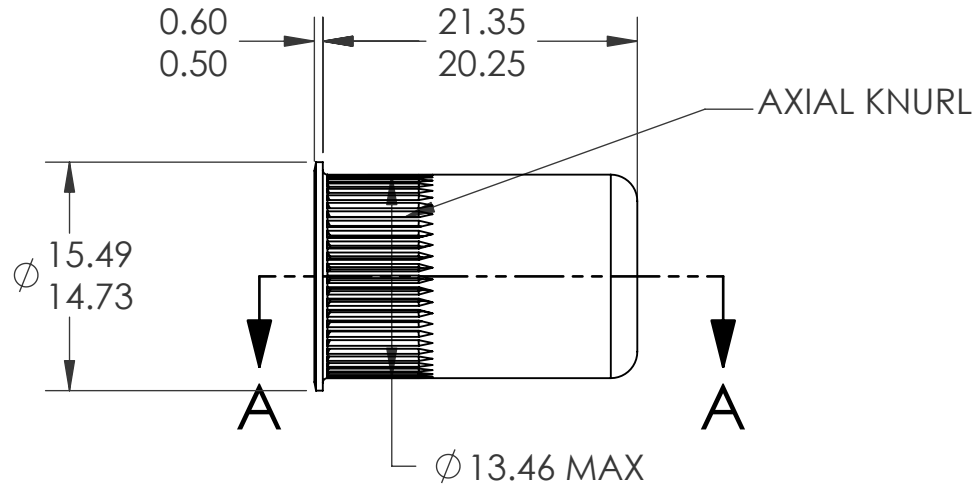
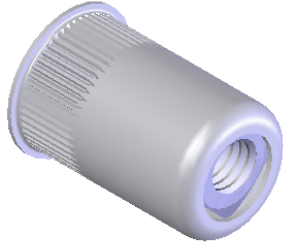
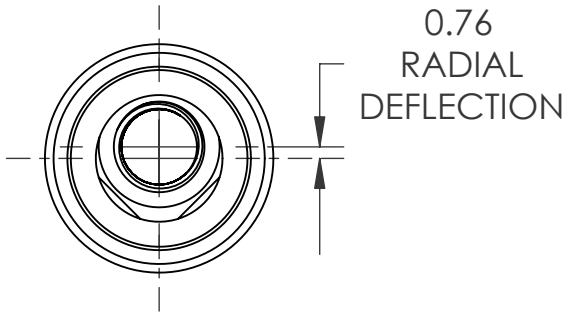


REVISIONS			
REV.	DESCRIPTION	DATE	ECN
A	INITIAL RELEASE	11/3/08	1107



M6X1.0 - 6H
PER ASME B1.13M
MINOR DIA.: 4.92 - 5.15

NOTE:

- GRIP RANGE: 0.7 - 3.8
- HOLE SIZE: $\varnothing 13.50 +.15/-0.00$ AFTER ALL APPLIED FINISHES.
- INSTALLED LENGTH: 16.00 REF.
- INSTALLED THREAD DEPTH: N/A
- LUBRICATION: NONE
- INSTALLATION TOOL: MS 50 (ANVIL - MA-357-M6RF)

PROPRIETARY AND CONFIDENTIAL
THIS DRAWING, AND THE INFORMATION CONTAINED HEREIN, ARE THE PROPERTY OF SHEREX AND ARE NOT TO BE USED IN ANY MANNER DETRIMENTAL TO THE INTEREST OF THE COMPANY.
SHEREX SOLUTIONS RESERVES THE RIGHT TO REVISE PART/DRAWING WITHOUT NOTICE.

		UNLESS OTHERWISE SPECIFIED:		NAME	DATE
		DIMENSIONS ARE IN INCHES TOLERANCES: ANGULAR: MACH ± 1 BEND ± 1 TWO PLACE DECIMAL $\pm .01$ THREE PLACE DECIMAL $\pm .005$	DRAWN	JVK	11/3/08
		INTERPRET GEOMETRIC TOLERANCING PER: ASME Y14.5M-1994	CHECKED		
		MATERIAL BODY: C1008/1010 NUT: MED. CARBON STEEL	ENG APPR.	JVK	11/3/08
		FINISH BODY & NUT: ZINC PLATE W/CLERH TRIVALENT CHROMIATE RoHS COMPLIANT; 8-12 μ m	MFG APPR.	AP	11/13/08
NEXT ASSY	USED ON		Q.A.		
APPLICATION		DO NOT SCALE DRAWING	COMMENTS: E-mail: info@sherex.com www.sherex.com Phone: 866-474-3739 Fax: 716-875-0358		



TITLE:
SMALL FLANGE RIV-FLOAT

SIZE DWG. NO.	REV
A RFK2-610-3.8	A
SCALE: 2:1	WEIGHT: .0111 kg
SHEET 1 OF 1	