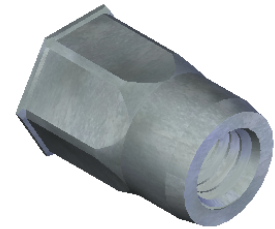


SECTION A-A

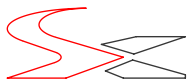
M6X1.0 6H
PER ASME B1.13M
MINOR DIA.: 4.92 - 5.15



- NOTE:**
- GRIP RANGE: 0.5 - 3.0
 - HOLE SIZE: 9.0 +0.1/0.0 A/F AFTER ALL APPLIED FINISHES.
 - INSTALLED LENGTH: N/A
 - INSTALLED THREAD DEPTH:
 - LUBRICATION: NONE
 - INSTALLATION TOOL: MS 50 SPIN PULL

PROPRIETARY AND CONFIDENTIAL
THIS DRAWING, AND THE INFORMATION CONTAINED HEREIN, ARE THE PROPERTY OF SHEREX AND ARE NOT TO BE USED IN ANY MANNER DETRIMENTAL TO THE INTEREST OF THE COMPANY.
SHEREX SOLUTIONS RESERVES THE RIGHT TO REVISE PART/DRAWING WITHOUT NOTICE.

		UNLESS OTHERWISE SPECIFIED:		NAME	DATE
		DIMENSIONS ARE IN MILLIMETERS TOLERANCES: ANGULAR: MACH ± 1 BEND ± 1 ONE PLACE DECIMAL ± 0.10 TWO PLACE DECIMAL ± 0.05	DRAWN	JVK	3/11/08
		INTERPRET GEOMETRIC TOLERANCING PER: ASME Y14.5M-1994	CHECKED		
		MATERIAL	ENG APPR.	JVK	3/11/08
		316 STAINLESS	MFG APPR.	TB	8/25/08
		FINISH	Q.A.		
		PASSIVATE	COMMENTS:	E-mail: info@sherex.com www.sherex.com Phone: 866-474-3739 Fax: 716-875-0358	
NEXT ASSY	USED ON				
APPLICATION		DO NOT SCALE DRAWING			



TITLE:
LOW PROFILE HEAD, SEMI HEX

SIZE DWG. NO.	REV
A TU-316M6HUKO30	A

SCALE: 2:1 WEIGHT: .0033 kg SHEET 1 OF 1