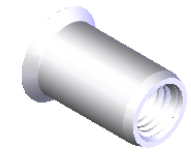
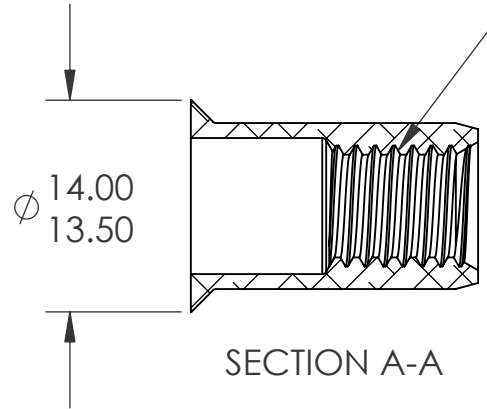


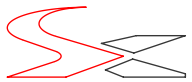
M8X1.25 6H  
PER ASME B1.13M  
MINOR DIA.: 6.65 - 6.91



- NOTE:**
- GRIP RANGE: 1.7 - 4.5
  - HOLE SIZE: 11.0 +0.1/-0.0 AFTER ALL APPLIED FINISHES.
  - INSTALLED LENGTH: N/A
  - INSTALLED THREAD DEPTH:
  - LUBRICATION: NONE
  - INSTALLATION TOOL: MS 50 SPIN PULL

**PROPRIETARY AND CONFIDENTIAL**  
THIS DRAWING, AND THE INFORMATION CONTAINED HEREIN, ARE THE PROPERTY OF SHEREX AND ARE NOT TO BE USED IN ANY MANNER DETRIMENTAL TO THE INTEREST OF THE COMPANY.  
SHEREX SOLUTIONS RESERVES THE RIGHT TO REVISE PART/DRAWING WITHOUT NOTICE.

		UNLESS OTHERWISE SPECIFIED:		NAME	DATE
		DIMENSIONS ARE IN MILLIMETERS TOLERANCES: ANGULAR: MACH ± 1 BEND ± 1 ONE PLACE DECIMAL ± 0.10 TWO PLACE DECIMAL ± 0.05	DRAWN	JVK	3/7/08
		INTERPRET GEOMETRIC TOLERANCING PER: ASME Y14.5M-1994	CHECKED		
		MATERIAL	ENG APPR.	JVK	3/7/08
		ALUMINUM ALMG 2.5 DIN 3.3523	MFG APPR.	TB	6/2/08
		FINISH	Q.A.		
		NONE	COMMENTS:		
			E-mail: info@sherex.com		
			www.sherex.com		
			Phone: 866-474-3739		
			Fax: 716-875-0358		
NEXT ASSY	USED ON				
APPLICATION		DO NOT SCALE DRAWING			

		
TITLE:		
COUNTER SUNK HEAD OPEN END		
SIZE DWG. NO.		REV
<b>A</b>	TU-AM8UFO45	A
SCALE: 2:1	WEIGHT: .0021 kg	SHEET 1 OF 1