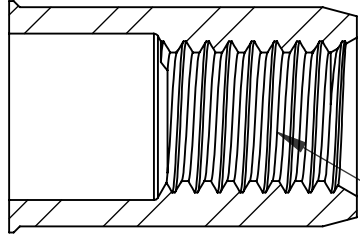
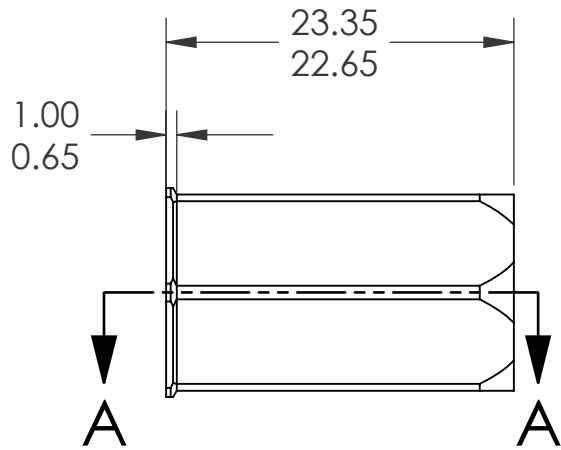
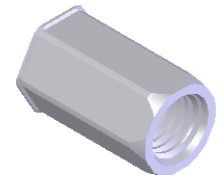
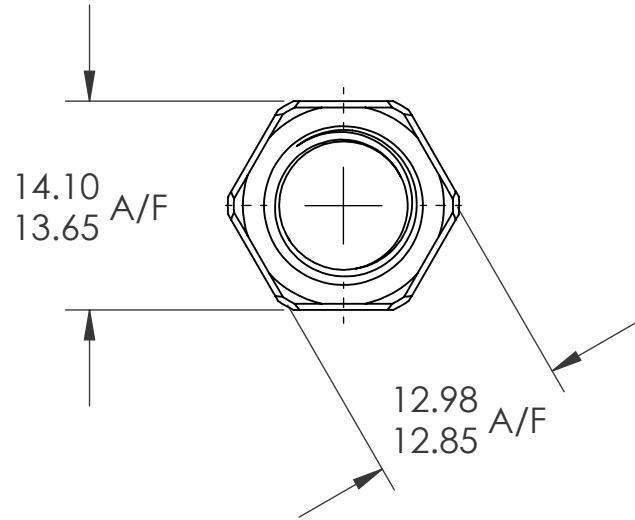


| REVISIONS | | | |
|-----------|-----------------|----------|------|
| REV. | DESCRIPTION | DATE | ECN |
| A | INITIAL RELEASE | 2/4/2014 | 1655 |



SECTION A-A

M10X1.5 6H
PER ASME B1.13M
MINOR DIA.: 8.38 - 8.68

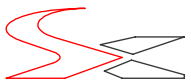


NOTE:

- GRIP RANGE: 0.8 - 3.5
- HOLE SIZE: 13.0 +0.1/-0.0 A/F AFTER ALL APPLIED FINISHES.
- INSTALLED LENGTH: N/A
- INSTALLED THREAD DEPTH:
- LUBRICATION: NONE
- INSTALLATION TOOL: FLEX 5P/5S SPIN PULL

PROPRIETARY AND CONFIDENTIAL
THIS DRAWING, AND THE INFORMATION CONTAINED HEREIN, ARE THE PROPERTY OF SHEREX AND ARE NOT TO BE USED IN ANY MANNER DETRIMENTAL TO THE INTEREST OF THE COMPANY.
SHEREX SOLUTIONS RESERVES THE RIGHT TO REVISE PART/DRAWING WITHOUT NOTICE.

| | | | | | |
|-------------|---------|--|---|------|----------|
| | | UNLESS OTHERWISE SPECIFIED: | | NAME | DATE |
| | | DIMENSIONS ARE IN MILLIMETERS TOLERANCES: ANGULAR: MACH ± 1 BEND ± 1 ONE PLACE DECIMAL ± 0.10 TWO PLACE DECIMAL ± 0.05 | DRAWN | JMC | 2/4/2014 |
| | | INTERPRET GEOMETRIC TOLERANCING PER: ASME Y14.5M-1994 | CHECKED | | |
| | | MATERIAL | ENG APPR. | JVK | 2/4/2014 |
| | | STEEL DIN QST 34-3 | MFG APPR. | | |
| | | FINISH | Q.A. | JR | 2/4/2014 |
| | | ZINKTOP CLEAR, ROHS COMPLIANT 96W/480R | COMMENTS: | | |
| NEXT ASSY | USED ON | | E-mail: info@sherex.com www.sherex.com Phone: 866-474-3739 Fax: 716-875-0358 | | |
| APPLICATION | | DO NOT SCALE DRAWING | | | |

| | | |
|---|------------------|--------------|
|  | | |
| TITLE: | | |
| LOW PROFILE FULL HEX OPEN END | | |
| SIZE DWG. NO. | REV | |
| A TU-SM10HSCO35ZT | A | |
| SCALE: 2:1 | WEIGHT: .0105 kg | SHEET 1 OF 1 |