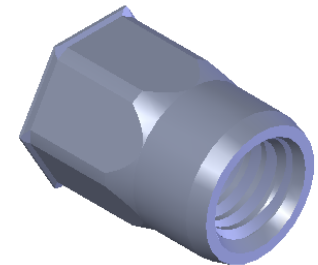


SECTION A-A

M8X1.25 6H
PER ASME B1.13M
MINOR DIA.: 6.65 - 6.91



NOTE:

1. GRIP RANGE: 0.5 - 3.0
2. HOLE SIZE: 11.0 +0.1/-0.0 A/F AFTER ALL APPLIED FINISHES.
3. INSTALLED LENGTH: N/A
4. INSTALLED THREAD DEPTH:
5. LUBRICATION: NONE
6. INSTALLATION TOOL: MS 50 SPIN PULL

PROPRIETARY AND CONFIDENTIAL
THIS DRAWING, AND THE INFORMATION CONTAINED HEREIN, ARE THE PROPERTY OF SHEREX AND ARE NOT TO BE USED IN ANY MANNER DETRIMENTAL TO THE INTEREST OF THE COMPANY.
SHEREX SOLUTIONS RESERVES THE RIGHT TO REVISE PART/DRAWING WITHOUT NOTICE.

| | | | | | | | |
|-------------|---------|--|--|--|------|---|--------------|
| | | UNLESS OTHERWISE SPECIFIED: | | NAME | DATE | | |
| | | DIMENSIONS ARE IN MILLIMETERS TOLERANCES: ANGULAR: MACH ± 1 BEND ± 1 ONE PLACE DECIMAL ± 0.10 TWO PLACE DECIMAL ± 0.05 | | DRAWN | JVK | | 3/20/08 |
| | | INTERPRET GEOMETRIC TOLERANCING PER: ASME Y14.5M-1994 | | CHECKED | | TITLE: LOW PROFILE, SEMI HEX, OPEN END | |
| | | MATERIAL 304 STAINLESS | | ENG APPR. | JVK | | 3/20/08 |
| | | FINISH PASSIVATE | | MFG APPR. | AP | 7/2/08 | |
| NEXT ASSY | USED ON | | | Q.A. | | SIZE DWG. NO. A TU-SSM8HUKO30 | |
| APPLICATION | | DO NOT SCALE DRAWING | | COMMENTS: E-mail: info@sherex.com www.sherex.com Phone: 866-474-3739 Fax: 716-875-0358 | | | REV A |
| | | | | SCALE: 2:1 | | WEIGHT: .0049 kg | SHEET 1 OF 1 |